

linea deko 2023



Index

Intro pag 04

Groove collection pag 10

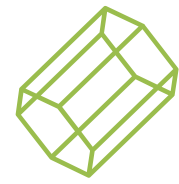
2019 collection pag 28

Aldo Cibic collection pag 44

Progettare con
lineadeko pag 60

Graphic designs pag 68

Tech Specs pag 84



Wood

**Designed by Nature,
decorated by Inkiostro Bianco**



La proposta green di Inkiostro Bianco

La Natura rappresenta una delle fonti inesauribili di ispirazione per la ricerca creativa di Inkiostro Bianco. L'innovazione applicata ai materiali è uno dei tratti distintivi del brand che, da sempre, coniuga il suo DNA artigiano alla tecnologia digitale e grazie ai processi di ingegnerizzazione dei materiali li trasforma in prodotti di design. La scelta di applicare il proprio know-how creativo a un materiale così nobile come il legno esalta la creatività che Inkiostro Bianco intende mettere al servizio del mondo dell'interior design. Accanto al mondo delle carte da parati, l'offerta si espande esplorando il legno come materiale ecosostenibile, oggi reso maggiormente prezioso da una nuova coscienza ambientale.

Rispetto per la Natura e per l'ambiente

Il legno utilizzato da Inkiostro Bianco deriva da programmi di rimboschimento finalizzati alla gestione sostenibile delle foreste. I processi di selezione, incollaggio, verniciatura osservano elevati livelli di rispetto ambientale sia nelle fasi di lavorazione e stampa, sia nelle fasi successive di utilizzo e messa in opera prediligendo colle di ultima generazione, finiture e verniciature ad acqua.

Natura, esperienza, decorazione e design

Il legno è una materia viva, sensibile, in continua trasformazione. È già straordinariamente plasmato dalla Natura: le rugosità, le tonalità, le linee del tempo ne costituiscono l'essenza e la bellezza nella sua apparente semplicità. Intervenire con un'ulteriore decorazione su un materiale così nobile richiede stile, esperienza e competenza. Inkiostro Bianco asseconda la gentilezza innata del legno aggiungendo una decorazione composta affinché l'eleganza della Natura sia preservata in tutta la sua magnificenza.

The green proposal by Inkiostro Bianco

Nature is one of the inexhaustible sources of inspiration for Inkiostro Bianco's creative research. Innovation applied to materials is one of the distinctive traits of the brand, which has always combined its artisan DNA with digital technology and, thanks to the engineering processes of the materials, transforms them into design products. The decision to apply its creative know-how to such a noble material as wood enhances the creativity that Inkiostro Bianco intends to put at the service of the world of interior design. Beside the world of wallpaper, the product range expands by exploring wood as a sustainable material, now made more valuable by a new environmental awareness.

Respect for Nature and the environment

The wood used by Inkiostro Bianco comes from reforestation programmes aimed at sustainable forest management. The selection, gluing and varnishing processes observe high levels of respect for the environment both in the processing and printing phases and in the subsequent phases of use and installation preferring the latest generation of glues, finishes and water-based varnishes.

Nature, experience, decoration and design

Wood is a living, sensitive material that is constantly changing. It is already extraordinarily shaped by Nature: the roughness, the shades, the lines of time constitute its essence and beauty in its apparent simplicity. Intervening with an additional decoration on such a noble material requires style, experience and expertise. Inkiostro Bianco goes along with the innate gentleness of wood by adding a composed decoration so that the elegance of Nature is preserved in all its magnificence.

Lineadeko

Superfici da accarezzare, da guardare e da vivere

Il senso di calore dato dalla materia legno genera sensazioni di benessere e di forte legame con la natura che sono divenute irrinunciabili nel mondo dell'interior design. L'attenzione all'elemento green viene considerata non solo da un punto di vista ecologico ma anche e soprattutto nell'inserimento di componenti naturali all'interno di un progetto. Tuttavia, non si tratta semplicemente di prevedere piante reali nei progetti, ma di considerare l'affinità istintiva e ancestrale che l'uomo ha con la natura e di rendere il tutto più armonico possibile.

Questo approccio progettuale riporta lo sguardo sulla centralità e il benessere della persona che vive lo spazio. Gli ingredienti possono essere sia elementi diretti come piante, acqua e suoni o anche elementi indiretti come materiali, colori e grafiche che richiamino ambienti naturali.

In quest'ottica Inkiostro Bianco propone una soluzione decorativa che metta in risalto al tempo stesso la creatività e la base naturale del legno di betulla. Natura e design si fondono per creare un prodotto in grado di incorniciare e dare risalto a ogni tipo di ambiente.

Elementi di arredo a parete

Un sistema di rivestimento su pannelli applicabili a parete come boiserie, composizioni modulari o composizioni creative, che permette di far comunicare diversi elementi architettonici all'interno della casa, disegnando geometrie e decorazioni dallo stile equilibrato e armonioso.

Lineadeko è una declinazione in cui la materia legno viene impreziosita da decorativi artistici singolari e raffinati, costruisce un percorso che sale in verticale e reinventa l'idea stessa di parete trasformandola.

Un elemento d'arredo capace di creare atmosfere fuori dall'ordinario. Un nuovo modo di concepire il rivestimento parietale che genera sensazioni uniche.

Pareti da accarezzare, vive e suggestive che regalano un nuovo modo di vivere la quotidianità e che riportano gli ambienti a una naturale bellezza da scoprire e condividere.

Surfaces to be touched, to be looked at and to be experienced

The sense of warmth given by the wood material generates feelings of well-being and a strong bond with nature that have become essential in the world of interior design. The attention to the green element is considered not only from an ecological point of view but also, and above all, in the inclusion of natural components within a project. However, it is not simply a matter of incorporating real plants into the interior design but of considering the instinctive and ancestral affinity that man has with nature and making everything as harmonious as possible.

This design approach brings the focus back to the centrality and well-being of the person experiencing the space. The ingredients can be either direct elements such as plants, water and sounds or indirect elements such as materials, colours and graphics that recall natural environments.

With this in mind, Inkiostro Bianco proposes a decorative solution that highlights both the creativity and the natural base of birchwood. Nature and design come together to create a product capable of framing and enhancing any type of environment.

Wall furniture elements

A wallcovering system on panels that can be applied as a boiserie, modular compositions or creative compositions, allowing different architectural elements to communicate within the home, designing geometries and decorations with a balanced and harmonious style.

Lineadeko is a declination in which the wood material is embellished with singular and refined artistic decorations, builds a path that rises vertically and reinvents the very idea of wall, thus transforming it.

A furnishing element capable of creating atmospheres out of the ordinary. A new way of conceiving wall covering that generates unique sensations.

Walls to caress, alive and evocative that offer a new way of experiencing everyday life and that bring environments back to a natural beauty to be discovered and shared.



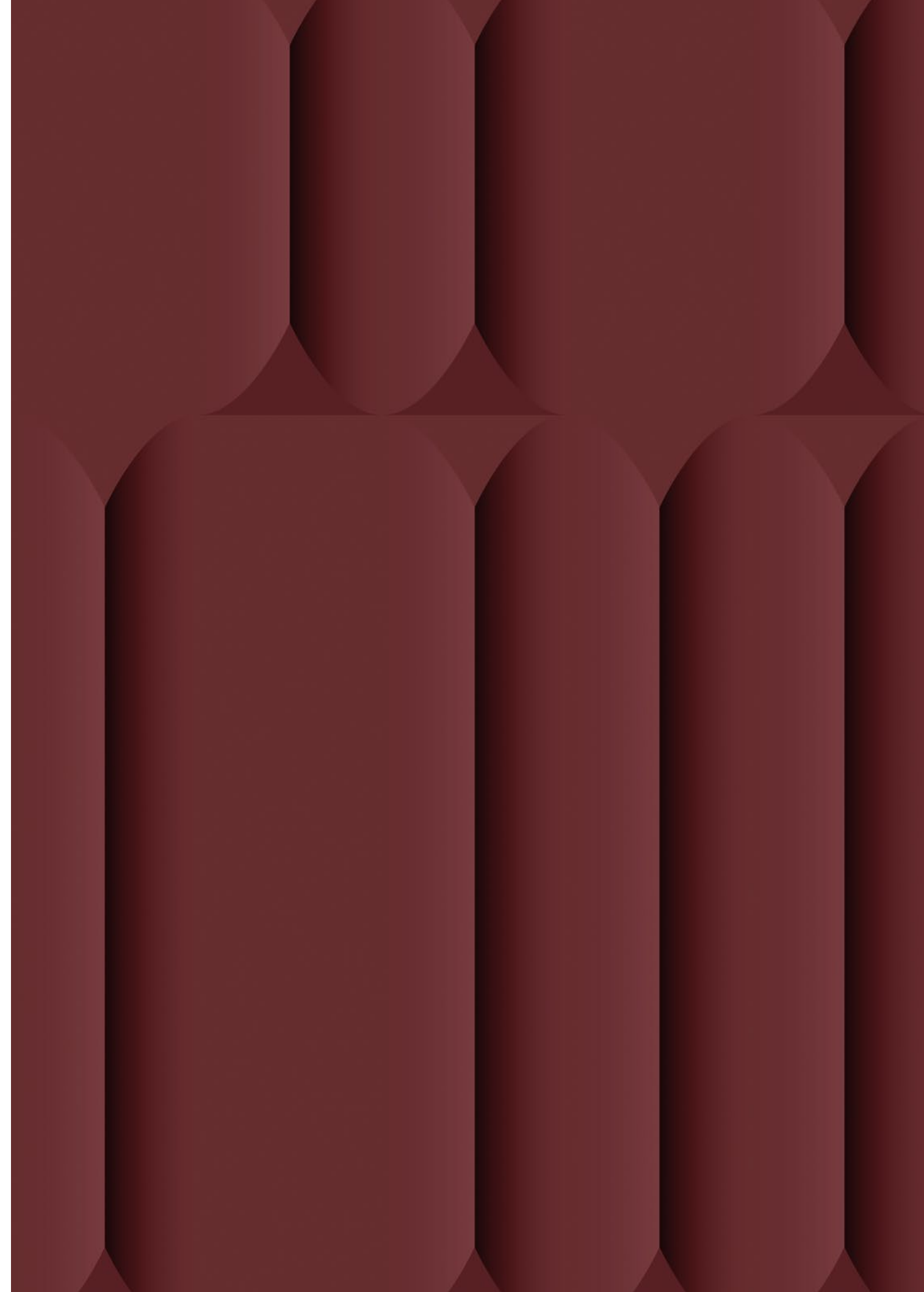
Groove

Collection

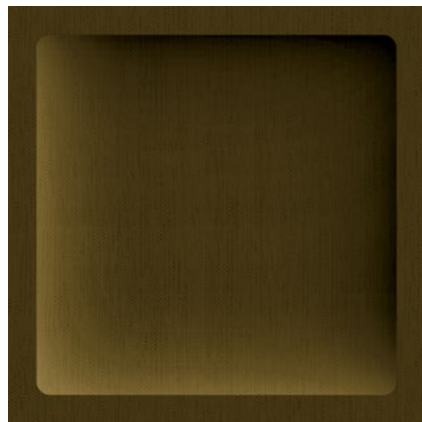
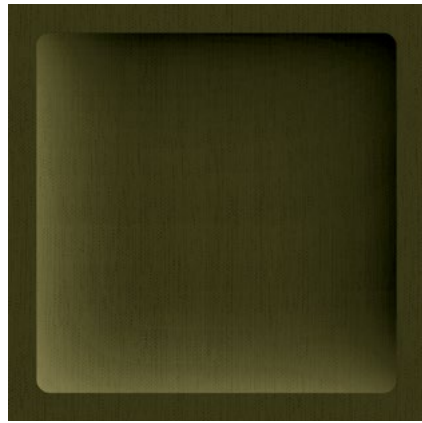
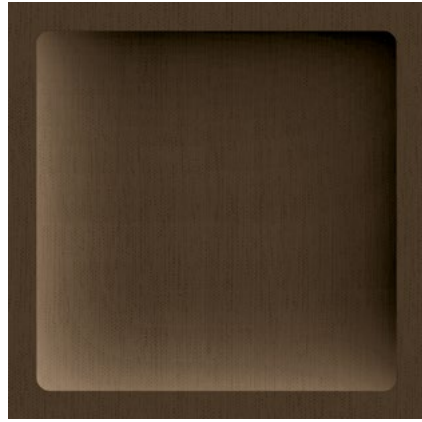
I linguaggi di arte e architettura si congiungono in una serie di decori interpretati da Inkiostro Bianco e dallo Studio Lucchesedesign. I nuovi spunti portano su materia un effetto visivo tridimensionale scandito da un susseguirsi di segni e armonie raccontate attraverso l'espressività del suono, nell'interpretazione sviluppata da Inkiostro Bianco, e quello delle superfici architettoniche nell'interpretazione di Lucchesedesign. Groove è il ritmo scolpito nei solchi di un 45 giri dove è incisa una magia. Silenzi, pause e successioni di accordi in perfetta sintonia. Un insieme armonico di immagini raccontate attraverso il suono. Groove risveglia emozioni forti e sensazioni stratificate i cui livelli compongono una melodia in musica e una tridimensionalità nella sua rappresentazione fisica. Groove è l'alternanza di chiaroscuri e sfumature che, in architettura, simulano un ritmo di volumi vuoti e pieni che impreziosiscono le superfici. Design, arte e architettura, combinati nell'interior design, aiutano a rendere un ambiente confortevole, funzionale ed esteticamente armonioso: le superfici diventano un elemento d'arredo protagonista.

The languages of art and architecture combine in a series of decorations interpreted by Inkiostro Bianco and Lucchesedesign Studio. The new ideas bring to the material a three-dimensional visual effect marked by a succession of signs and harmonies told through the expressions of sound, in the interpretation developed by Inkiostro Bianco, and that of architectural surfaces in the interpretation of Lucchesedesign.

Groove is the rhythm carved into the grooves of a 45 rpm disc where magic is engraved. Silences, pauses and chord successions in perfect harmony. A harmonic set of images told through sound. Groove awakens strong emotions and layered sensations whose layers compose a melody in music and a third-dimension in its physical representation. Groove is the alternation of light and shade that, in architecture, simulates a rhythm of empty and full volumes that embellish surfaces. Design, art and architecture combined within interior design, help to make a comfortable, functional and aesthetically harmonious environment: surfaces become an essential furnishing element.



Lacunari

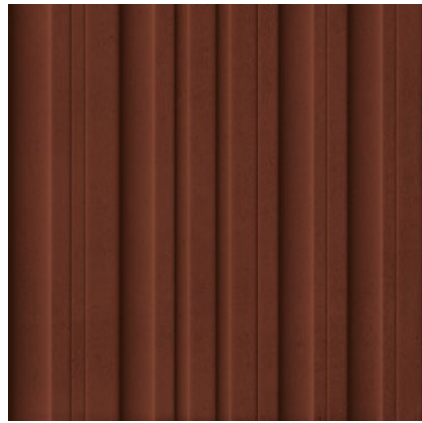


Composizioni modulari
formate da:
8 pannelli dim. 60X60 cm

*Modular compositions
consisting of:
8 panels dimension 60x60 cm*



Rilievi

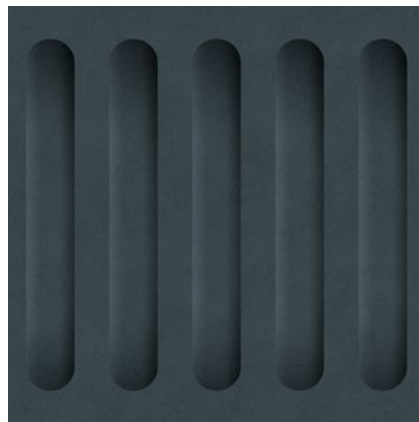
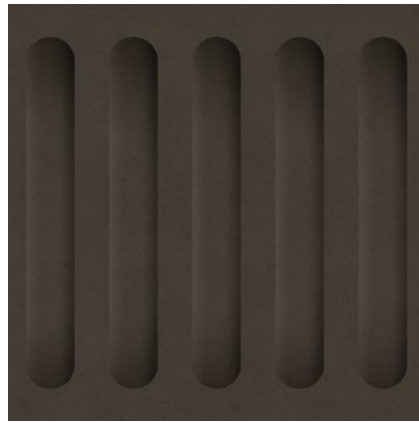
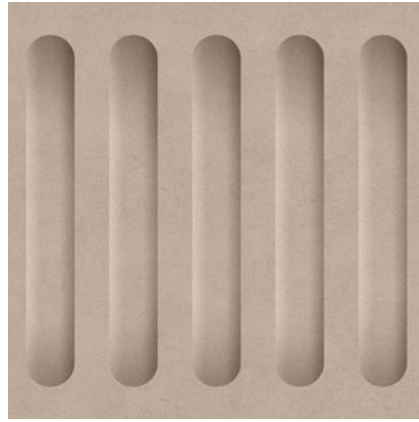


Composizione creativa
formata da:
totale 6 pannelli dim. 60×120 cm

*Creative composition
consisting of:
overall 6 panels dimension 60×120 cm*



Strie



**(sinistra) Composizione creativa formata da:
4 pannelli dim. 60×60 cm e 1 pannello dimensione 60×120 cm**

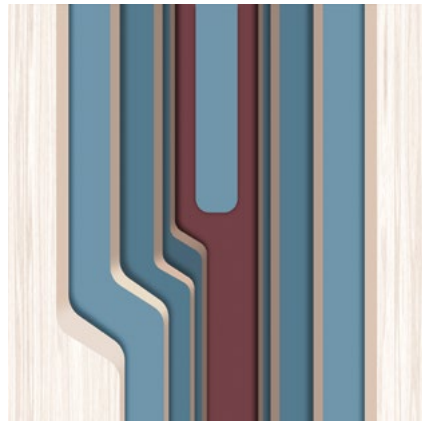
*(left) Creative composition consisting of:
4 panels dimension 60×60 cm e 1 panel dimension 60×120 cm*

**(destra) Composizione creativa formata da:
7 pannelli dim. 60×60 cm e 1 pannello dimensione 60×120 cm**

*(right) Creative composition consisting of:
7 panels dimension 60×60 cm and 1 panel dimension 60×120 cm*



Allegro



Composizione modulare
formata da:
8 pannelli dim. 60×120 cm

*Modular composition
consisting of:
8 panels dimension 60×120 cm*



Adagio

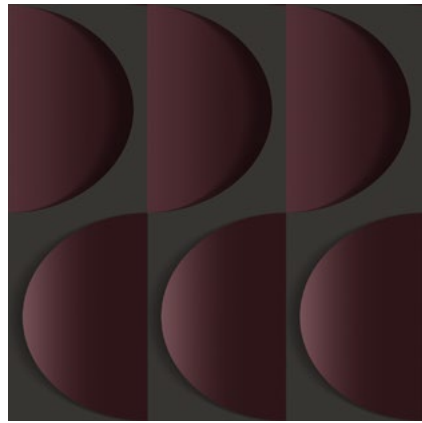


Composizioni modulari
formate da:
4 pannelli dim. 60×120 cm

*Modular compositions
consisting of:
4 panels dimension 60×120 cm*



Legato



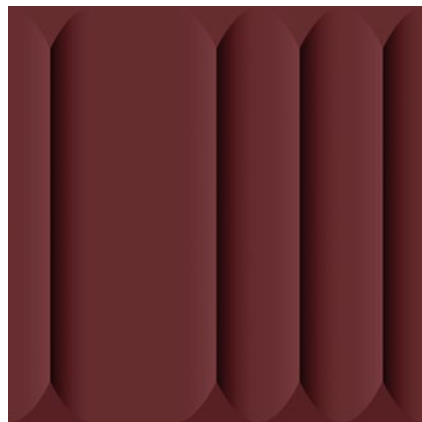
Composizioni modulari
formate da:
8 pannelli dim. 60×120 cm

*Modular compositions
consisting of:
8 panels dimension 60×120 cm*



Motivo


archiproducts
DESIGN AWARDS
2022
WINNER

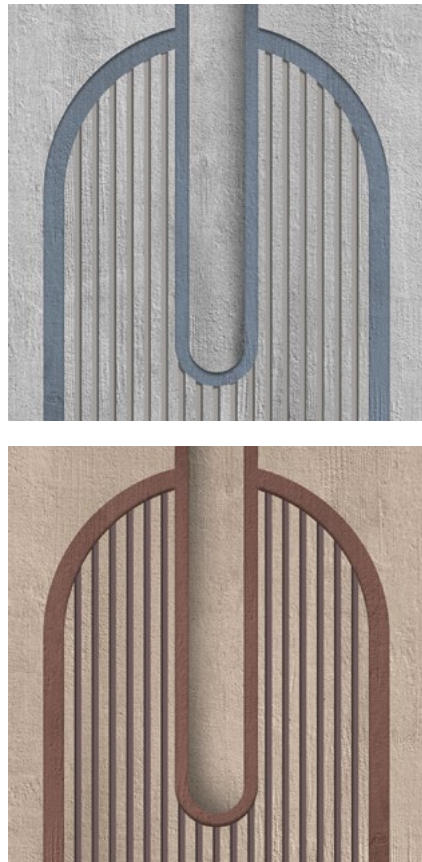


Pannelli dim. 60×120 cm
applicazione a boiserie

*Panels dimension 60×120 cm
boiserie application*



Pizzicato



Composizioni modulari
formate da:
2 pannelli dim. 60×120 cm

*Modular compositions
consisting of:
2 panels dimension 60×120 cm*



2019

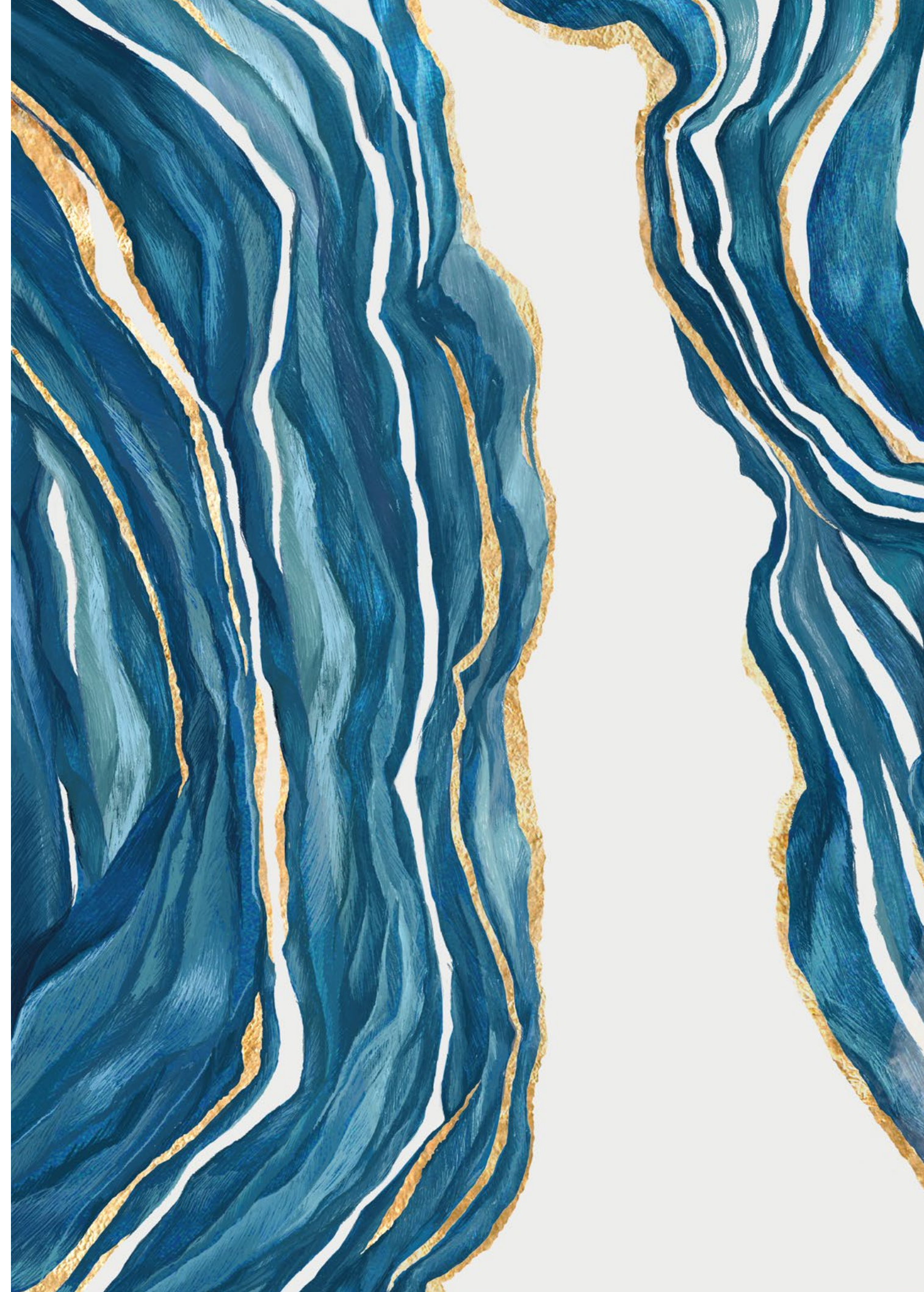
Collection

Una sperimentazione di forme e colori prende vita sulla trama lignea delle superfici in betulla nella interpretazione condivisa di Studio Zero e di Inkiostro Bianco. Linee morbide e geometrie si alternano e rendono speciali le atmosfere che le ospitano. Un rivestimento parietale sul quale il colore rispetta la naturalità della materia prima preservando l'effetto materico della betulla e la piacevolezza al tatto. Sfumature fluide e grafismi anni Settanta, ripresi in chiave moderna, si sovrappongono alla texture delicata del legno di betulla in un intreccio di linee, pattern e velate trasparenze.

Segni, colori e forme sono il tramite per una dimensione astratta che è al di là della loro essenza fisica: le immagini e le composizioni che si creano evocano infinite storie racchiuse negli spazi intimi dell'immaginazione e della reminiscenza. Composizioni dalle delicate sfumature si trasformano in una distesa di territori astratti e lunari, fatti solo di luce e colore, o in architetture di sabbia come miraggi nel deserto.

La materia viva del legno traspare attraverso i segni e le forme senza venire nascosta e racconta anch'essa la sua natura, la sua realtà.

An experimentation of shapes and colours intertwine on the wooden weft of the birch surfaces within the interpretation of Studio Zero and Inkiostro Bianco. Soft lines and geometries alternate and add a special touch to the atmospheres of the rooms. A wallcovering on which the colour respects the naturalness of the surface by preserving the effect of birchwood and its pleasant touch. Fluid shades and 70s graphic designs are reinterpreted from a modern point of view and overlap with the delicate birchwood texture, thus overlaying lines, patterns and light transparencies. Signs, colours and shapes open the doors of an abstract dimension beyond their physical essence: the pictures and compositions evoke infinite stories enclosed in the intimate spaces of imagination and reminiscence. Compositions of delicate shades turn themselves into abstract and lunar territories composed by light and colour, or into sand architectures like a mirage in the desert. The living wooden material shows through signs and shapes and unveils its nature and its reality.



Limen

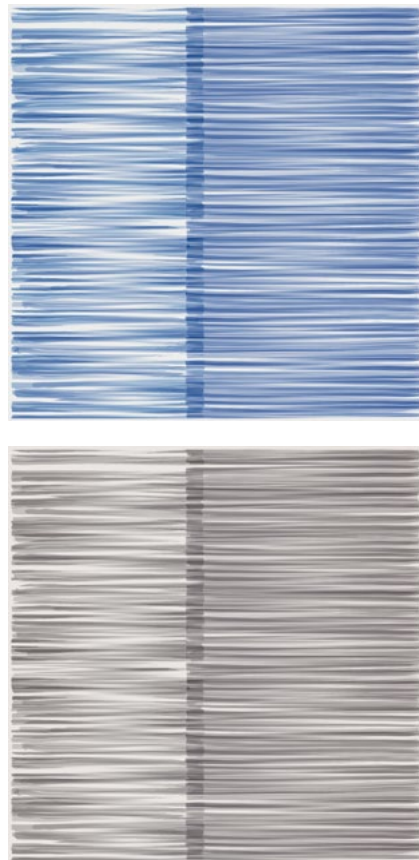


Composizione creativa
formata da:
totale 7 pannelli dim. 60×120
cm e 10 pannelli dim. 60×60 cm

*Creative composition consisting of:
overall 7 panels dimension 60×120
cm and 10 panels dimension 60×60 cm*



Coste



**(sinistra) Composizione creativa formata da:
6 pannelli dim. 60×60 cm e 2
pannelli dim. 60×120 cm**

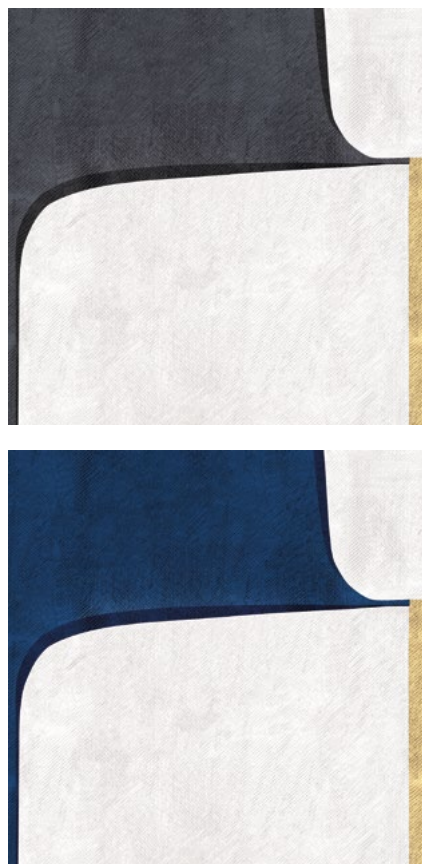
*(left) Creative composition consisting of:
6 panels dimension 60×60 cm and
2 panels dimension 60×120 cm*

**(destra) Composizione creativa formata da:
3 pannelli dim. 60×60 cm e 1
pannello dim. 60×120 cm**

*(right) Creative composition consisting of:
3 panels dimension 60×60 cm and 1
panel dimension 60×120 cm*



Tableau

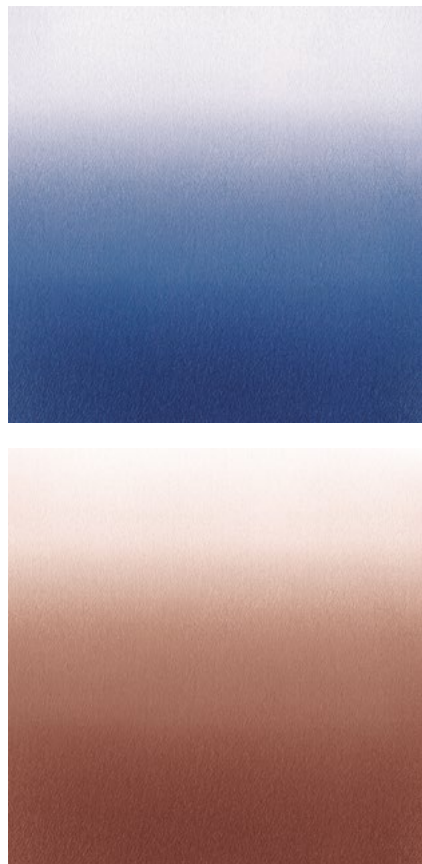


Composizione creativa
formata da:
4 pannelli dim. 60X120 cm e 8
pannelli dim. 60X60 cm

*Creative composition
consisting of:
4 panels dimension 60X120 cm and
8 panels dimension 60X60 cm*



Paesaggi



(sinistra) Composizione modulare formata da: 8 pannelli dim. 60×60 cm

(left) Modular composition consisting of: 8 panels dimension 60×60 cm

(centro e destra) Composizione modulare formata da: 4 pannelli dim. 60×60 cm

(center and right) Modular composition consisting of: 4 panels dimension 60×60 cm



Falling



Composizioni creative
formate da:
3 pannelli dim. 60×120 cm
e 2 pannelli dim. 60×60 cm
applicazione con sistema di
ancoraggio a parete

*Creative compositions
consisting of:
3 panels dimension 60×120 cm
and 2 panels dimension 60×60 cm
application with wall anchoring
frame*



Fitful

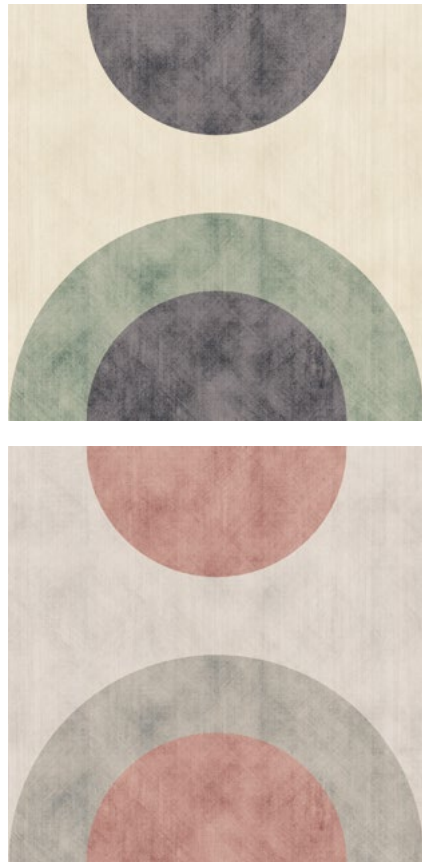


Composizione creativa
formata da:
4 pannelli dim. 60×120 cm e 8
pannelli dim. 60×60 cm

*Creative composition
consisting of:
4 panels dimension 60×120 cm and
8 panels dimension 60×60 cm*



Genesis



(sinistra) Composizione modulare formata da: 4 pannelli dim. 60×120 cm

(left) Modular composition consisting of: 4 panels dimension 60×120 cm

(destra) Composizione modulare formata da: 8 pannelli dim. 60×120 cm

(right) Modular composition consisting of: 8 panels dimension 60×120 cm



Aldo Cibic

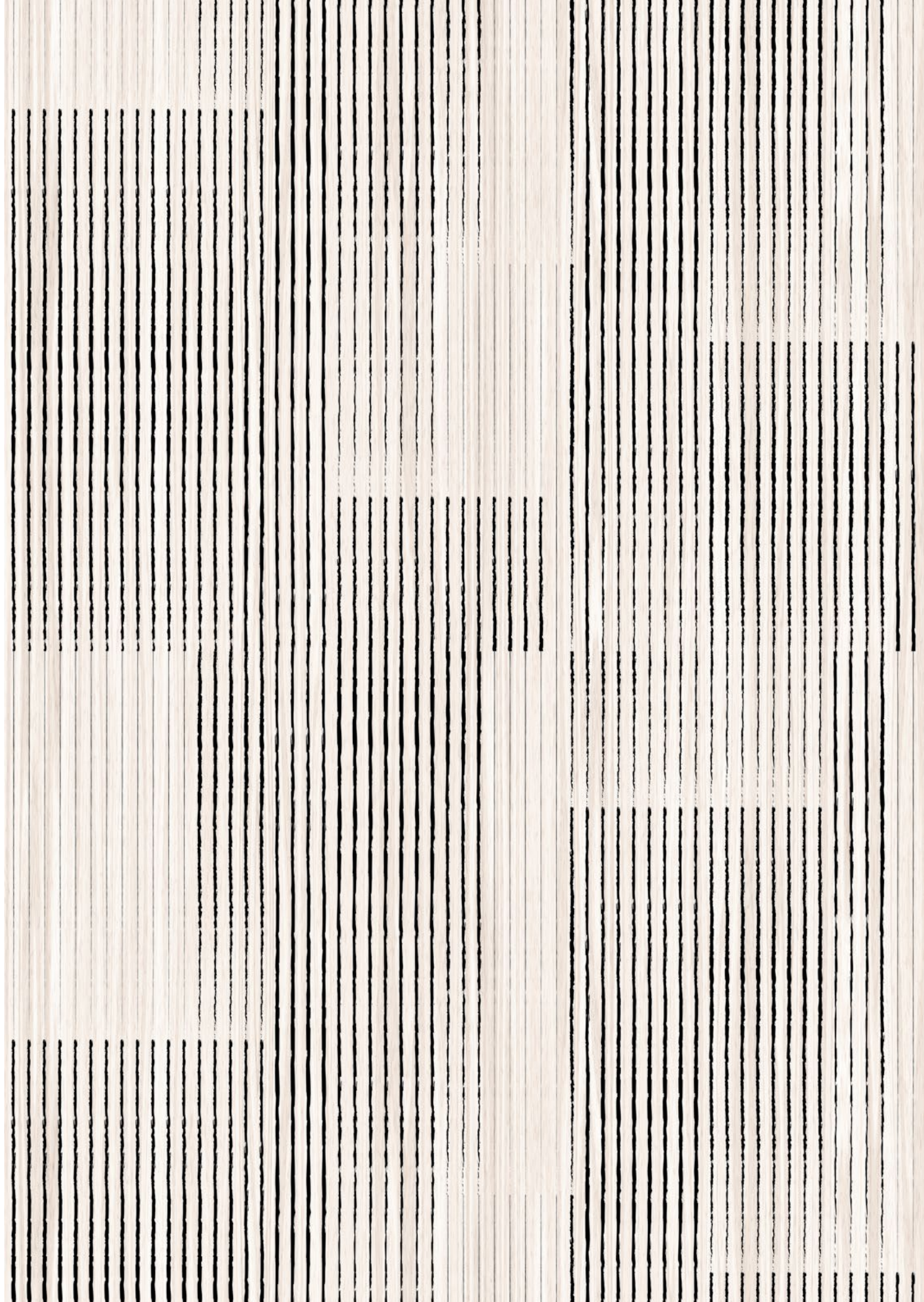
Collection

La collezione di decorativi lineadeko firmata da Aldo Cibic rappresenta il connubio perfetto tra design, naturalezza della materia lignea e nuove tecnologie di stampa. Un progetto raffinato dal grande impatto estetico e decorativo, ricco di elementi scenografici ispirati alla natura, alle arti grafiche, fotografia e arte che solcano splendide pareti animandole di eleganti sfaccettature e texture di design. Nove sono i decori disponibili per creare soluzioni estetiche dall'effetto straordinariamente vellutato e morbido al tatto. I pattern sono caratterizzati da tracciati di linee che incontrano forme ritmiche e armoniose, a volte tondeggianti altre minimali.

Questo sistema di rivestimento permette di far comunicare elementi architettonici dalla diversa estetica all'interno della casa, disegnando geometrie e decorazioni che definiscono uno stile equilibrato e armonioso. Si crea così un filo conduttore che accompagna l'occhio a leggere le forme come facenti parte di un unico insieme.

The collection of lineadeko decorations signed by Aldo Cibic represents the perfect union among design, naturalness of the wooden material and new digital printing technologies. A sophisticated project with a striking aesthetic and decorative impact, rich in spectacular elements inspired by nature, graphic arts, photography and contemporary art, which cut through gorgeous walls and liven them up with elegant aspects and design textures. Nine decors are available to create aesthetic solutions with an extraordinary velvety and soft effect. The patterns feature trails of lines joining rhythmic and harmonic shapes, some curved and others minimal.

This covering system connects architectural elements with different aesthetics within the house, sketching geometries and decorations that combine and create a balanced and harmonic style. Thus, a common thread is created, which leads the eye to perceive the various shapes as a whole.



Fogliame

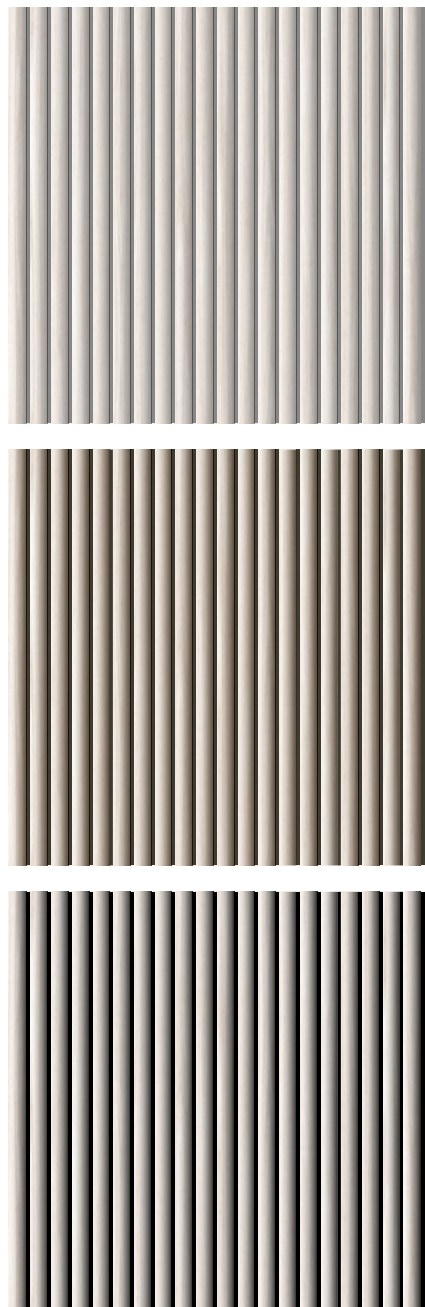


Composizioni creative
formate da:
6 pannelli dim. 60X120 cm

*Creative compositions
consisting of:
6 panels dimension 60X120 cm*



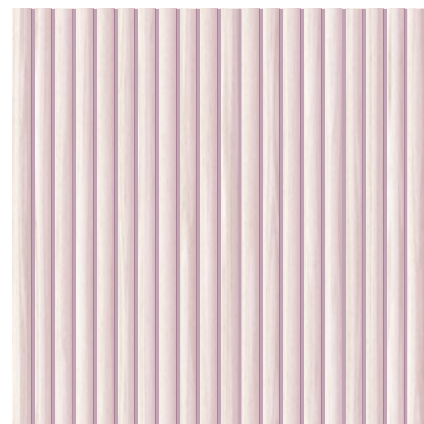
Canneto



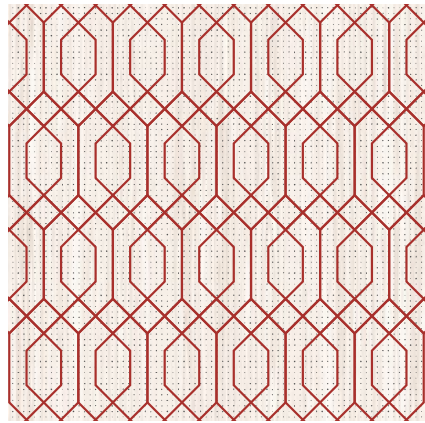
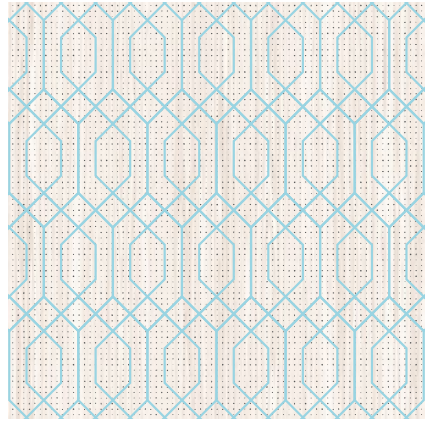
archiproducts
DESIGN AWARDS
—
WINNER 2018

Composizioni modulari
formate da:
4 pannelli dim. 60×120 cm

*Modular compositions
consisting of:
4 panels dimension 60×120 cm*



Losanga

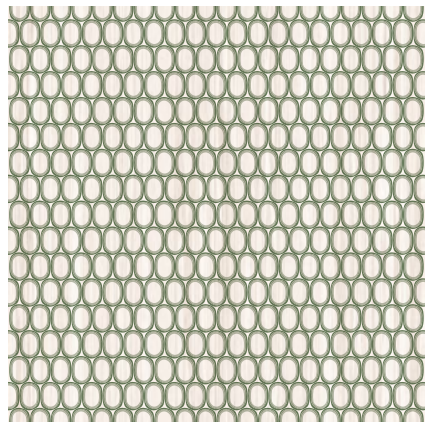
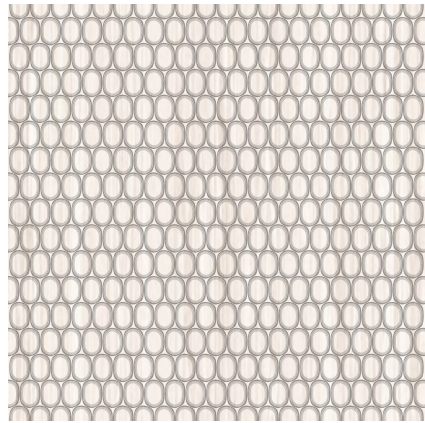
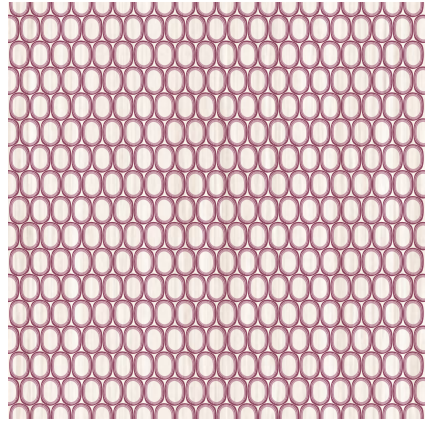


**Composizione creativa
formata da:
6 pannelli dim. 60×120 cm**

*Creative composition
consisting of:
6 panels dimension 60×120 cm*



Semini

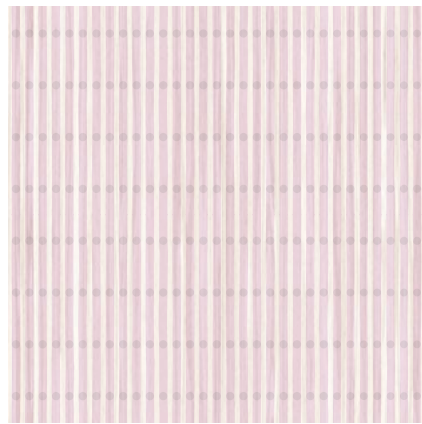
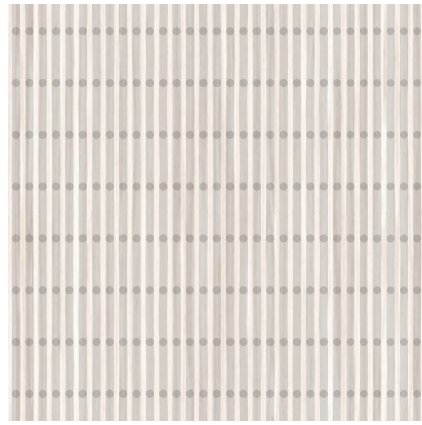


Pannelli dim. 60×120 cm
applicazione a boiserie

*Panels dimension 60×120cm
boiserie application*



Tondini

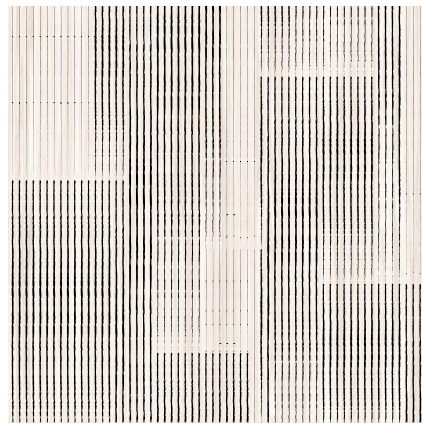


Pannelli dim. 60×120 cm
applicazione a boiserie

*Panels dimension 60×120cm
boiserie application*



Rigato



(sinistra) Composizioni modulari formate da:
2 pannelli dim. 60×120 cm

(left) Modular compositions consisting of:
2 panels dimension 60×120 cm

(destra) Composizione creativa formata da:
1 pannello dim. 60×120 cm

(right) Creative composition consisting of:
1 panel dimension 60×120 cm



Ventaglio



Composizioni modulari
formate da:
2 pannelli dim. 60×120 cm

*Modular compositions
consisting of:
2 panels dimension 60×120 cm*



Progettare con Lineadeko

60

Vogliamo proporci come consulenti di interior design e per questo aggiorniamo sempre con cura le proposte che offriamo al mondo della progettazione. Il nostro obiettivo è fornire continua ispirazione allo sviluppo di ambienti accoglienti. Desideriamo che la bellezza contribuisca al benessere delle persone che abiteranno o frequenteranno gli spazi progettati.

La versatilità delle collezioni lineadeko consente l'utilizzo modulare dei pannelli come elementi d'arredo a parete e al tempo stesso una declinazione creativa del rivestimento in composizioni libere a seconda delle esigenze di progetto.

In questa sezione ampliamo le idee di applicazione dei rivestimenti lineadeko in legno di betulla attraverso la visione e l'esperienza del progettista. L'Architetto Francesco Lucchese (Studio Lucchesedesign) utilizza lineadeko all'interno dei suoi progetti e ci ha fornito alcuni suggerimenti di possibili declinazioni della materia legno. Da semplice rivestimento il legno può diventare un complemento d'arredo originale, funzionale e raffinato. L'intuizione del progettista amplifica il potenziale delle collezioni lineadeko attraverso nuove ed esclusive esplorazioni.

We want to present ourselves as interior design consultants, which is why we always carefully update the proposals we offer to the design world. Our aim is to provide continuous inspiration for the development of welcoming environments. We want beauty to contribute to the well-being of the people who will inhabit or frequent the designed spaces.

The versatility of the lineadeko collections allows the modular use of the panels as wall elements and at the same time a creative declination of the panels in free compositions according to project requirements.

In this section we expand on the application ideas of lineadeko birchwood wallcovering through the vision and experience of the interior designer. Architect Francesco Lucchese (Studio Lucchesedesign) uses lineadeko within his projects and has provided us with some suggestions of possible declinations of the wood material. From a simple cladding, wood can become an original, functional and refined furnishing accessory. The designer's intuition amplifies the potential of lineadeko collections through new and exclusive explorations.

art. STRIE
Composizione creativa formata da:
8 pannelli dim. 60×120 cm

*Creative composition consisting of:
8 panels dimension 60×120 cm*





art. RILIEVI
 Composizioni modulari formate da:
 4 pannelli dim. 60×120 cm

*Modular compositions consisting of:
 4 panels dimension 60×120 cm*



art. MOTIVO
 Composizione creativa formata da:
 12 pannelli dim. 60×60 cm

*Creative composition consisting of:
 12 panels dimension 60×60 cm*



art. LACUNARI
 Composizione creativa formata da:
 totale 24 pannelli dim. 60×60 cm

*Creative composition consisting of:
 overall 24 panels dimension 60×60 cm*



art. ADAGIO
 Composizione creativa formata da:
 20 pannelli dim. 60×60 cm

*Creative composition consisting of:
 20 panels dimension 60×60 cm*

art. PIZZICATO
 Composizione creativa formata da:
 6 pannelli dim. 60×120 cm

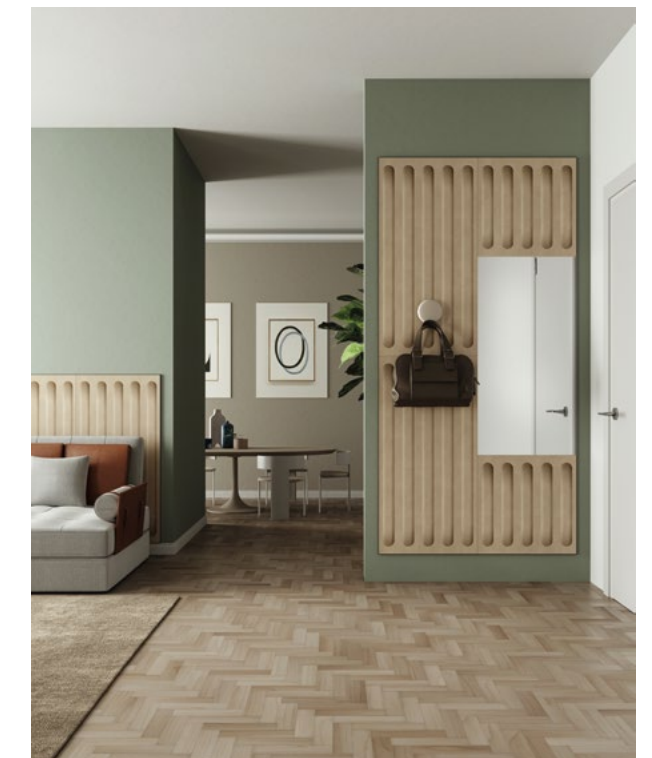
*Creative composition consisting of: 6
 panels dimension 60×120 cm*

art. STRIE
 (sinistra) Pannelli dim. 60×120 cm
 applicazione boiserie

*(left) Panels dimension 60z120 cm
 boiserie application*

**(destra) Composizione creativa formata da:
 2 pannelli dim. 60×120 cm e 2 pannelli 60×60 cm**

*(right) Creative composition consisting of:
 2 panels dimension 60×120 cm and 2 panels dimension 60×60 cm*





art: FOGLIAME
Composizione creativa formata da:
12 pannelli dim. 60×120 cm

*Creative composition consisting of:
12 panels dimension 60×120 cm*



art. ADAGIO
Composizione creativa formata da:
11 pannelli dim. 60×120 cm

*Creative composition consisting of:
11 panels dimension 60×120 cm*

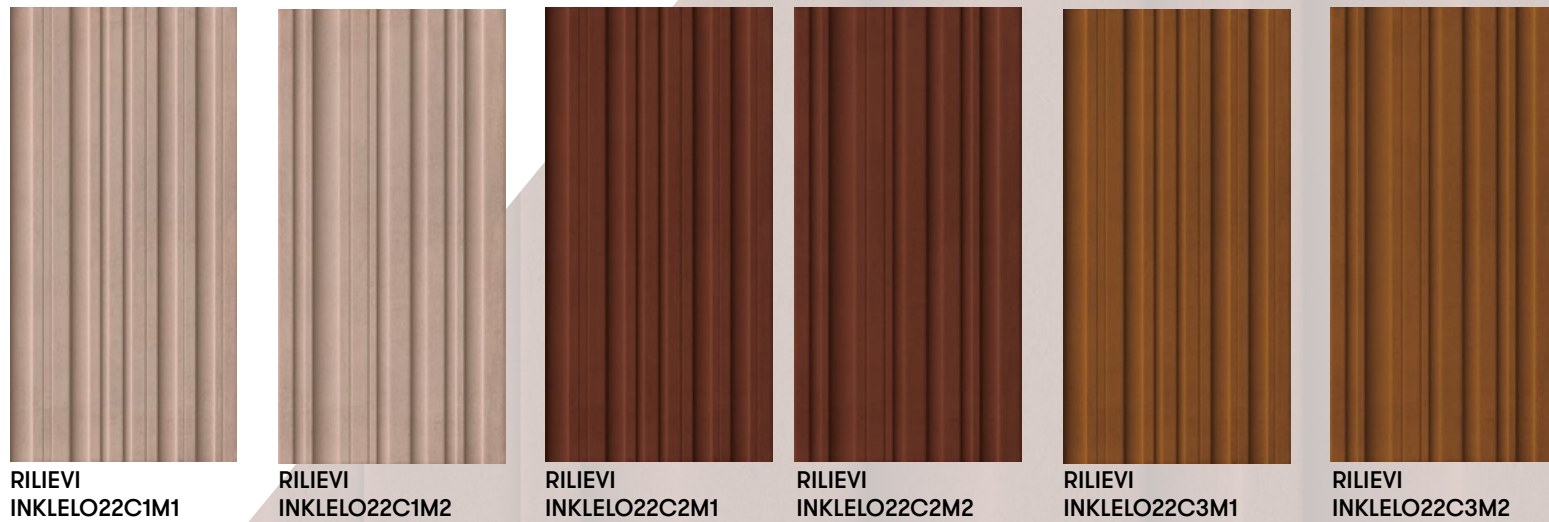
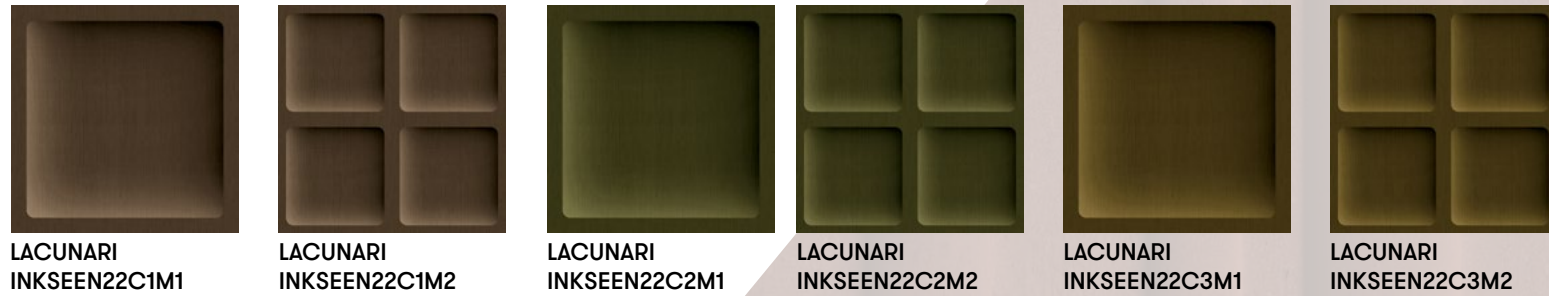


art. LOSANGA
Composizione creativa formata da:
2 pannelli dim. 60×120 cm

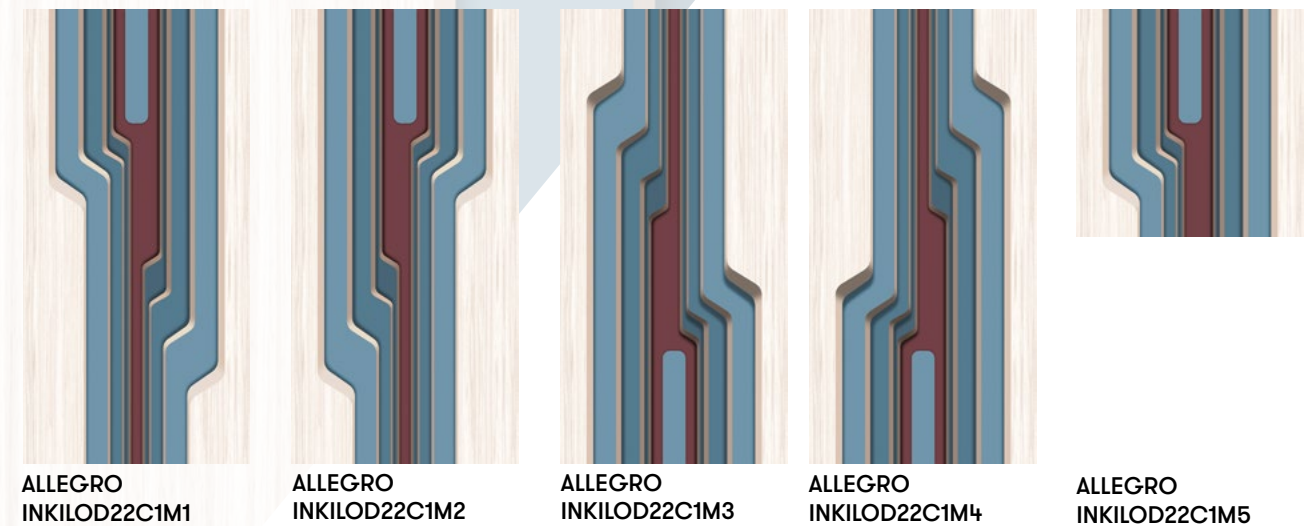
*Creative composition consisting of:
2 panels dimension 60×120 cm*

Graphic designs

GROOVE COLLECTION BY LUCCHSEDESIGN



GROOVE COLLECTION BY INKIOSTRO BIANCO





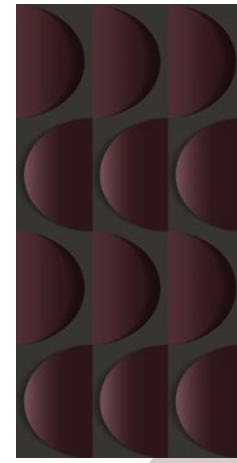
ADAGIO
INKEOGN22C1M1



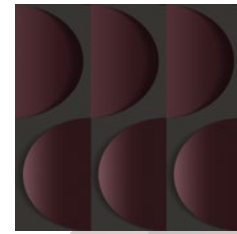
ADAGIO
INKEOGN22C1M2



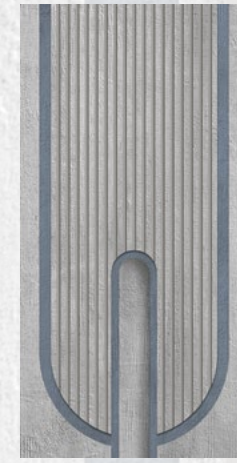
ADAGIO
INKEOGN22C1M3



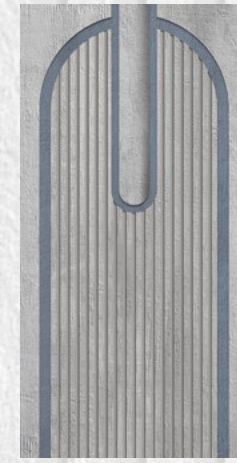
LEGATO
INKOALK22C1M1



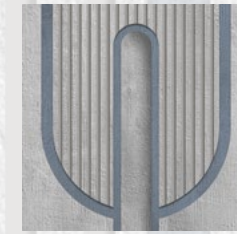
LEGATO
INKOALK22C1M2



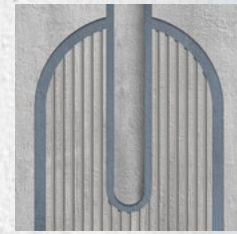
PIZZICATO
INKDNAE22C1M1



PIZZICATO
INKDNAE22C1M2



PIZZICATO
INKDNAE22C1M3



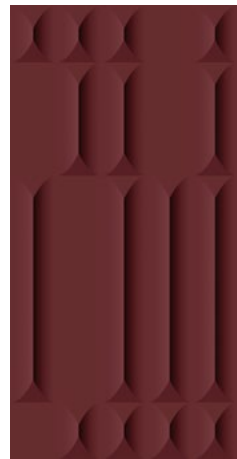
PIZZICATO
INKDNAE22C1M4



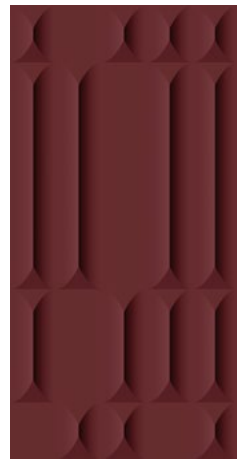
PIZZICATO
INKDNAE22C1M5



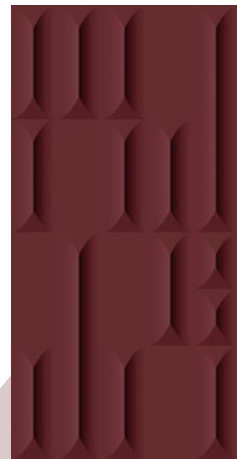
PIZZICATO
INKDNAE22C1M6



MOTIVO
INKADKE22C1M1



MOTIVO
INKADKE22C1M2



MOTIVO
INKADKE22C1M3



MOTIVO
INKADKE22C1M4



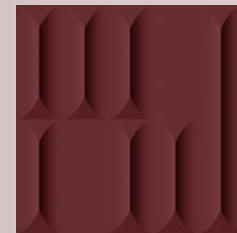
MOTIVO
INKADKE22C1M5



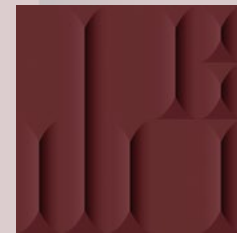
MOTIVO
INKADKE22C1M6



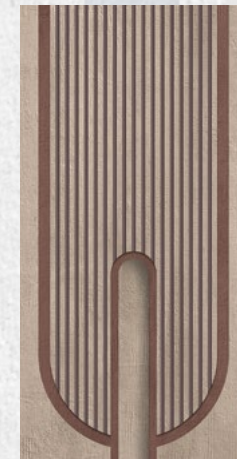
MOTIVO
INKADKE22C1M7



MOTIVO
INKADKE22C1M8



MOTIVO
INKADKE22C1M9



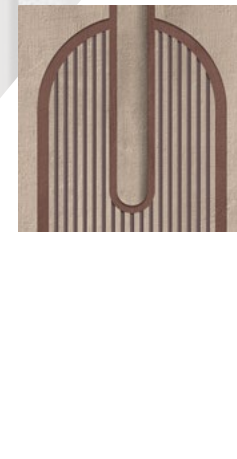
PIZZICATO
INKDNAE22C2M1



PIZZICATO
INKDNAE22C2M2



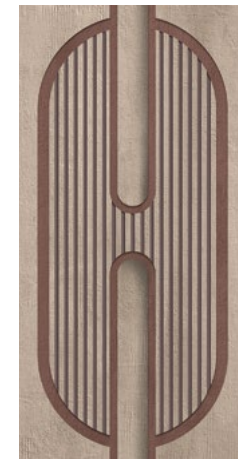
PIZZICATO
INKDNAE22C2M3



PIZZICATO
INKDNAE22C2M4

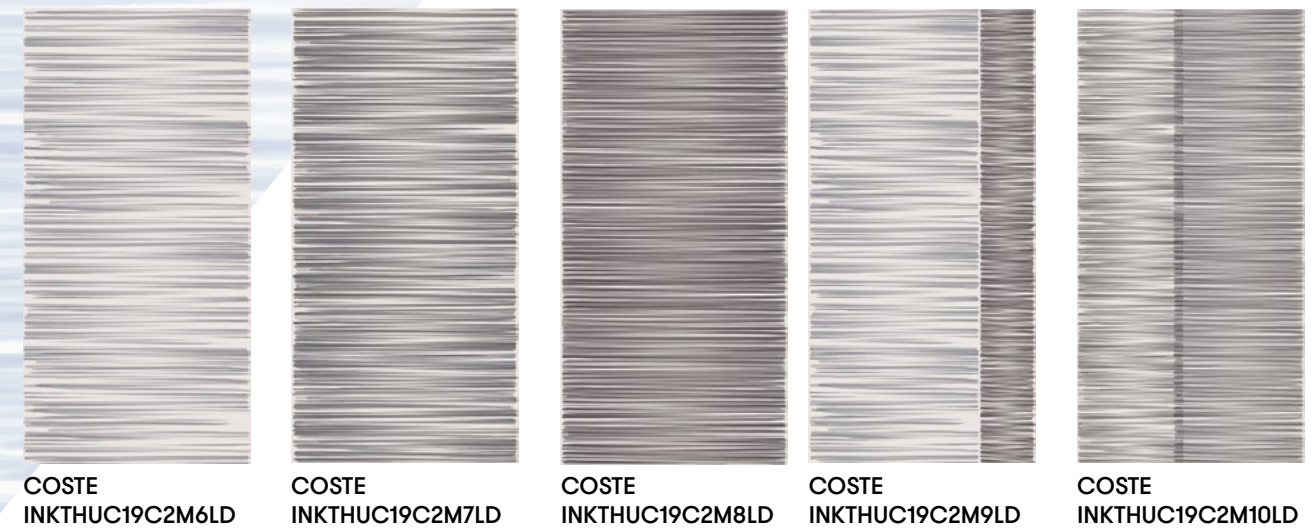
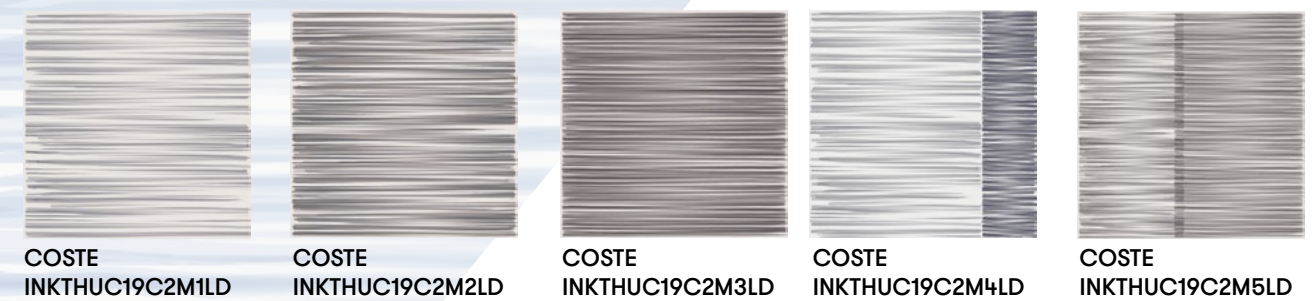
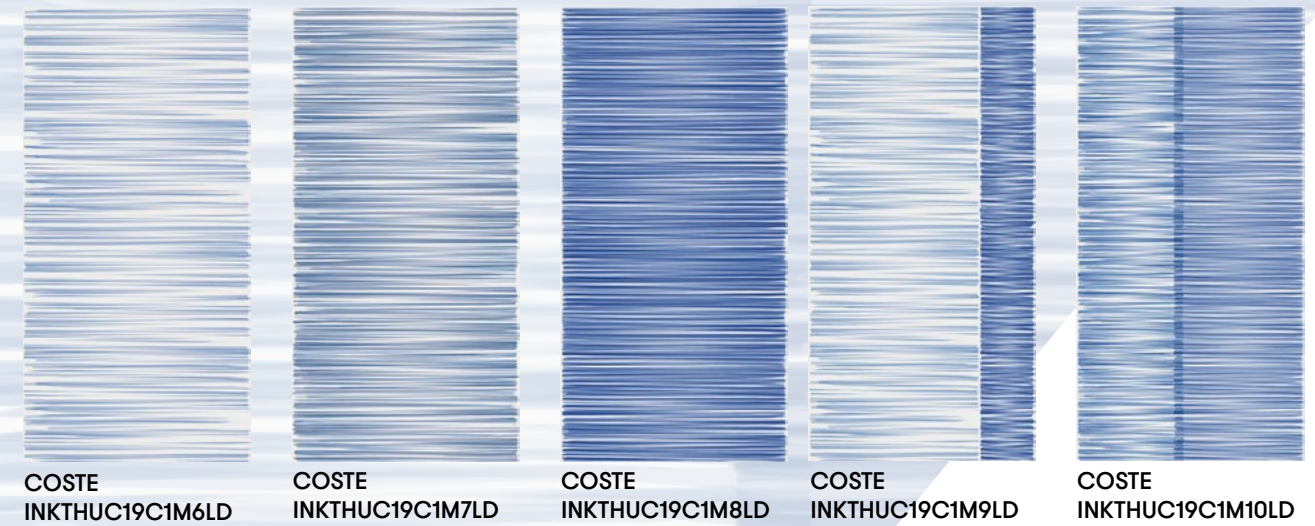
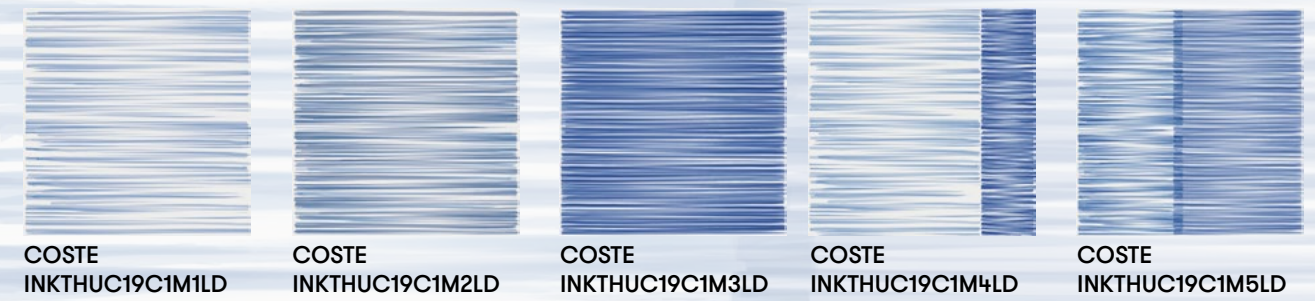
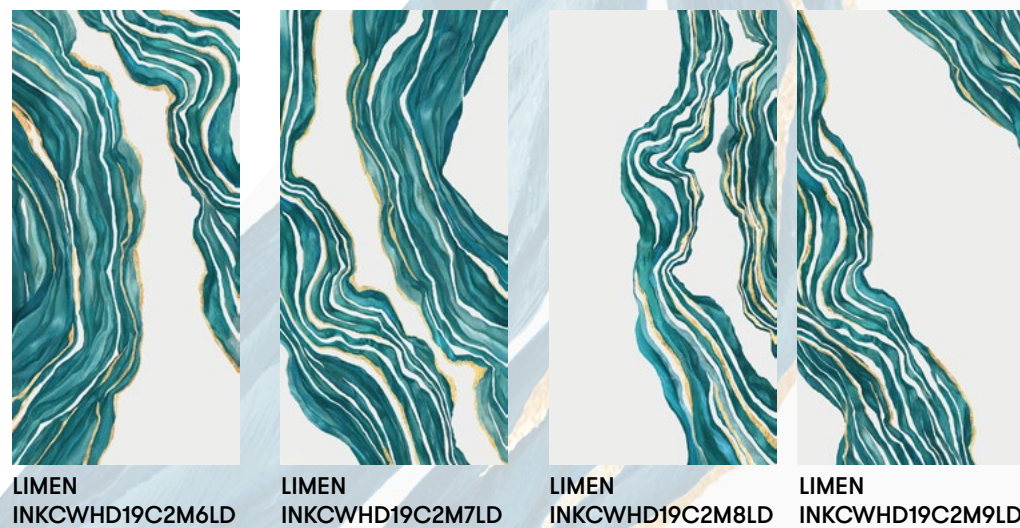
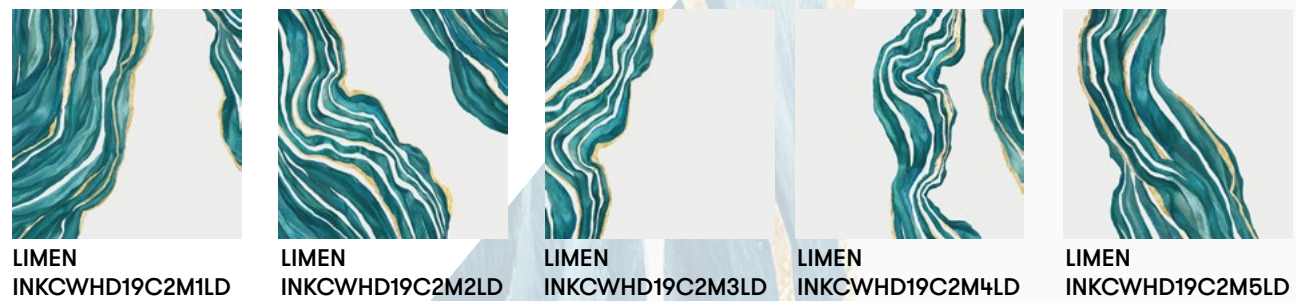
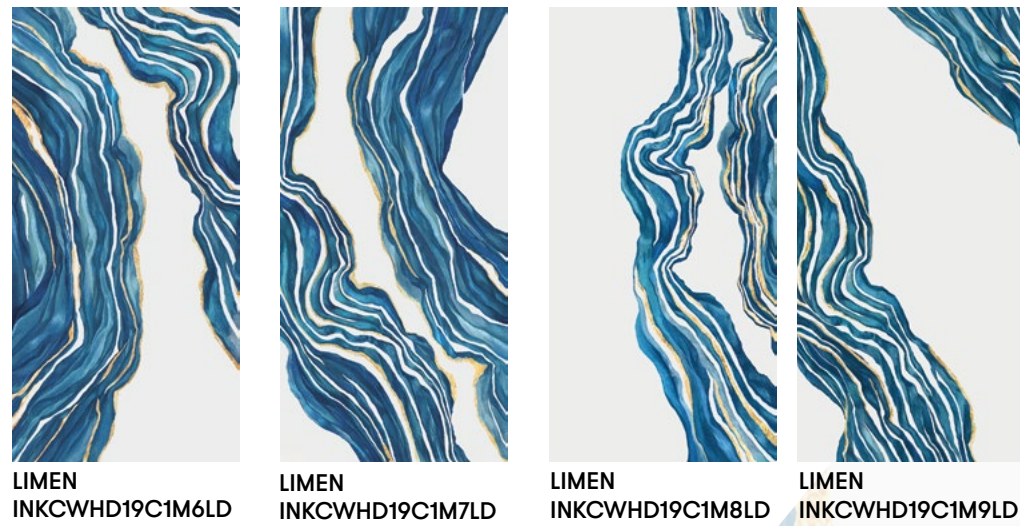
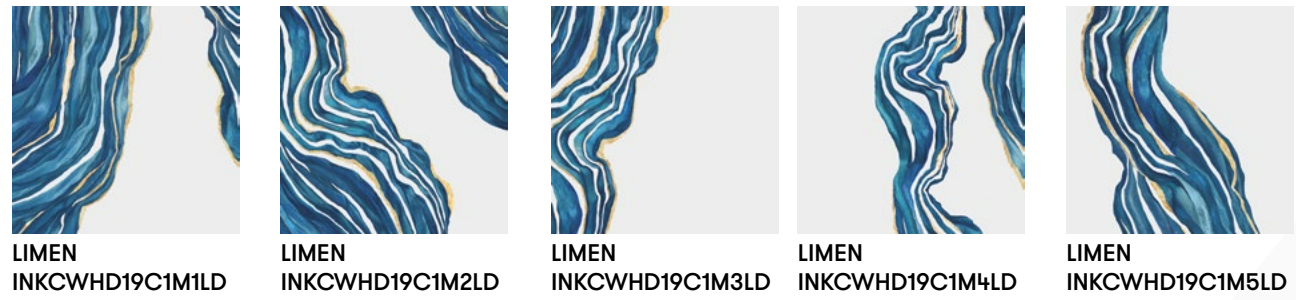


PIZZICATO
INKDNAE22C2M5



PIZZICATO
INKDNAE22C2M6

2019 COLLECTION BY STUDIO ZERO



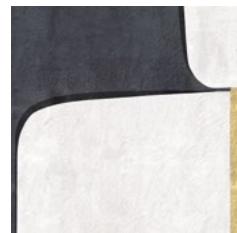


TABLEAU
INKSOEZ19C1M1LD

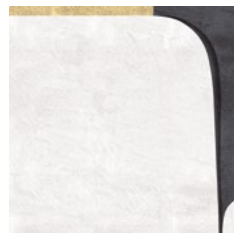


TABLEAU
INKSOEZ19C1M2LD



TABLEAU
INKSOEZ19C1M3LD



TABLEAU
INKSOEZ19C2M1LD

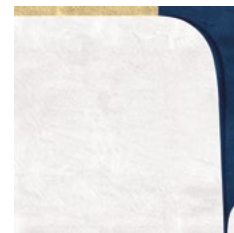


TABLEAU
INKSOEZ19C2M2LD



TABLEAU
INKSOEZ19C2M3LD



TABLEAU
INKSOEZ19C1M4LD

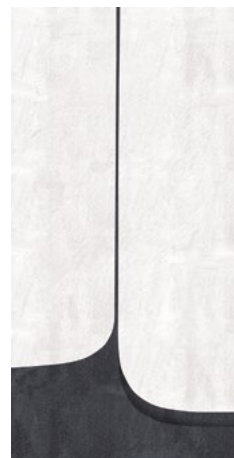


TABLEAU
INKSOEZ19C1M5LD



TABLEAU
INKSOEZ19C1M6LD



TABLEAU
INKSOEZ19C2M4LD

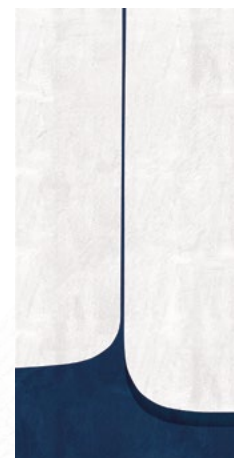


TABLEAU
INKSOEZ19C2M5LD



TABLEAU
INKSOEZ19C2M6LD



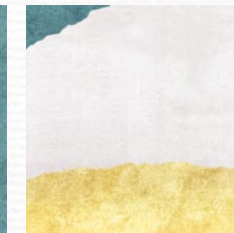
LARIO
INKTFOM19C1M1LD



LARIO
INKTFOM19C1M2LD



LARIO
INKTFOM19C1M3LD



LARIO
INKTFOM19C1M4LD



LARIO
INKTFOM19C1M5LD



LARIO
INKTFOM19C1M6LD



LARIO
INKTFOM19C1M7LD



PAESAGGI
INKGVQA19C1M1LD



PAESAGGI
INKGVQA19C1M2LD



PAESAGGI
INKGVQA19C1M3LD



PAESAGGI
INKGVQA19C1M4LD



PAESAGGI
INKGVQA19C1M5LD



PAESAGGI
INKGVQA19C1M6LD



LARIO
INKTFOM19C2M1LD



LARIO
INKTFOM19C2M2LD



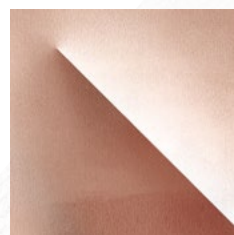
LARIO
INKTFOM19C2M3LD



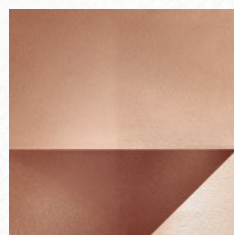
LARIO
INKTFOM19C2M4LD



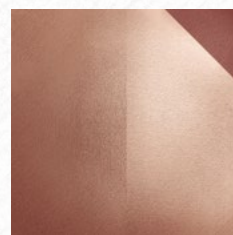
PAESAGGI
INKGVQA19C2M1LD



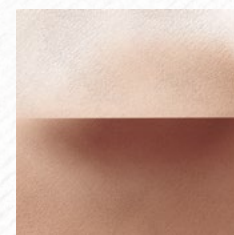
PAESAGGI
INKGVQA19C2M2LD



PAESAGGI
INKGVQA19C2M3LD



PAESAGGI
INKGVQA19C2M4LD



PAESAGGI
INKGVQA19C2M5LD



PAESAGGI
INKGVQA19C2M6LD



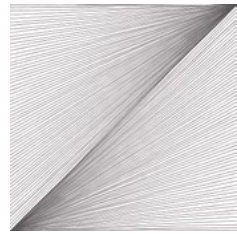
LARIO
INKTFOM19C2M5LD



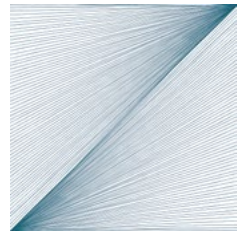
LARIO
INKTFOM19C2M6LD



LARIO
INKTFOM19C2M7LD



FOYER
INKKEIR19C1M1LD



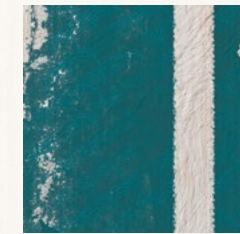
FOYER
INKKEIR19C2M1LD



FOYER
INKKEIR19C1M2LD



FOYER
INKKEIR19C2M2LD



FITFUL
INKHYQD19C1M1LD



FITFUL
INKHYQD19C1M2LD



FITFUL
INKHYQD19C1M3LD



FITFUL
INKHYQD19C1M4LD



FITFUL
INKHYQD19C1M5LD



FALLING
INKFLMW19C1M1LD



FALLING
INKFLMW19C1M2LD



FALLING
INKFLMW19C1M3LD



FALLING
INKFLMW19C1M4LD



FALLING
INKFLMW19C1M5LD



FALLING
INKFLMW19C1M6LD



FALLING
INKFLMW19C1M7LD



FALLING
INKFLMW19C1M8LD



GENESIS
INKXEDZ19C1M1LD



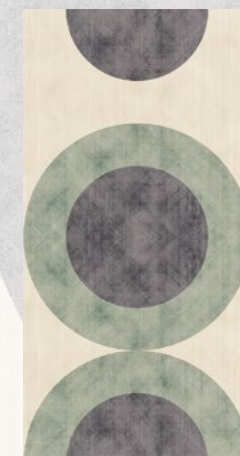
GENESIS
INKXEDZ19C1M2LD



GENESIS
INKXEDZ19C1M3LD



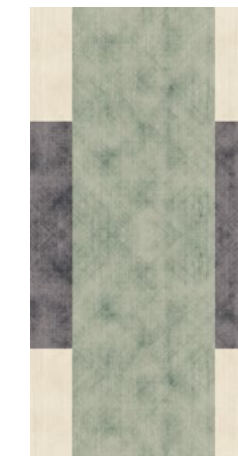
GENESIS
INKXEDZ19C1M4LD



GENESIS
INKXEDZ19C1M5LD



GENESIS
INKXEDZ19C1M6LD

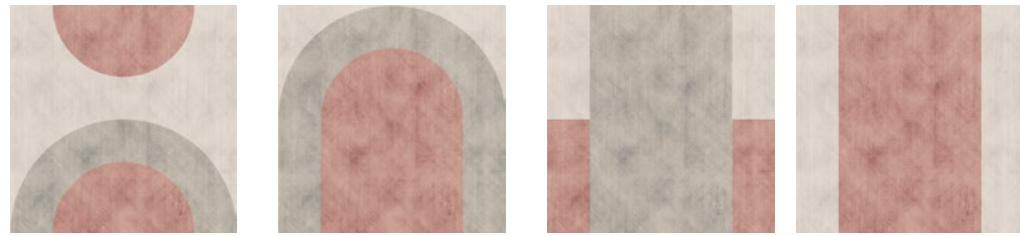


GENESIS
INKXEDZ19C1M7LD

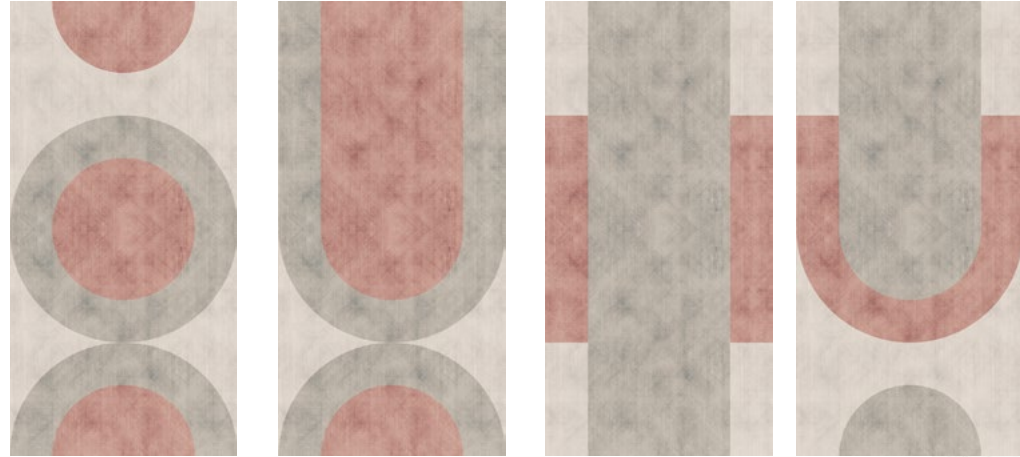


GENESIS
INKXEDZ19C1M8LD

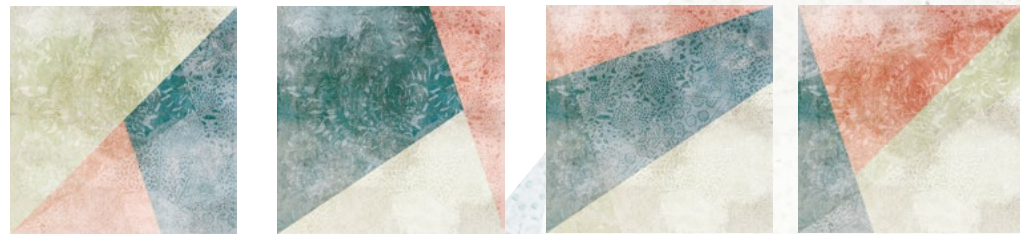
2019 COLLECTION BY INKIOSTRO BIANCO



GENESIS
INKXEDZ19C2M1LD GENESIS
INKXEDZ19C2M2LD GENESIS
INKXEDZ19C2M3LD GENESIS
INKXEDZ19C2M4LD



GENESIS
INKXEDZ19C2M5LD GENESIS
INKXEDZ19C2M6LD GENESIS
INKXEDZ19C2M7LD GENESIS
INKXEDZ19C2M8LD



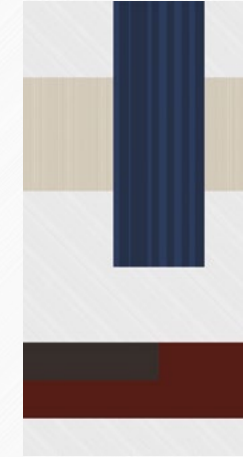
EUCLIDEO
INKTIJC19C1M1LD EUCLIDEO
INKTIJC19C1M2LD EUCLIDEO
INKTIJC19C1M3LD EUCLIDEO
INKTIJC19C1M4LD



EUCLIDEO
INKTIJC19C1M5LD EUCLIDEO
INKTIJC19C1M6LD EUCLIDEO
INKTIJC19C1M7LD EUCLIDEO
INKTIJC19C1M8LD



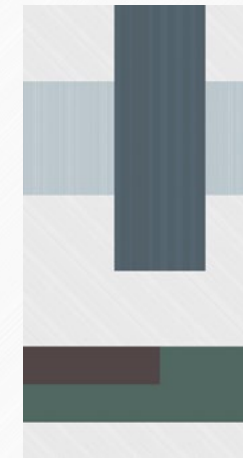
MAZE
INKUJBK19C1M1LD



MAZE
INKUJBK19C1M4LD



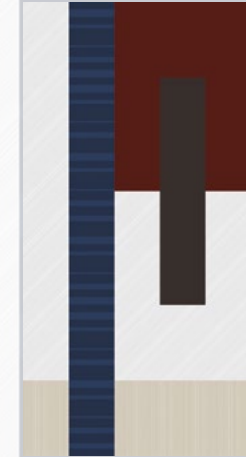
MAZE
INKUJBK19C2M1LD



MAZE
INKUJBK19C2M4LD



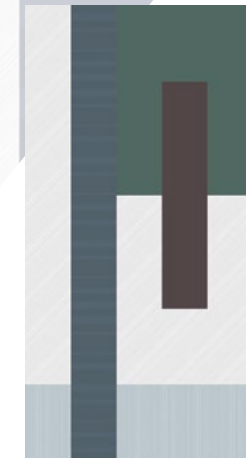
MAZE
INKUJBK19C1M2LD



MAZE
INKUJBK19C1M5LD



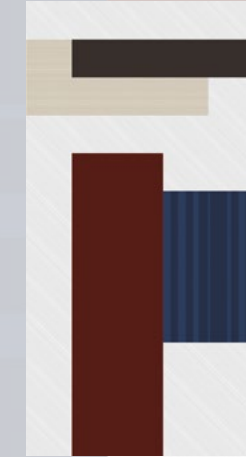
MAZE
INKUJBK19C2M2LD



MAZE
INKUJBK19C2M5LD



MAZE
INKUJBK19C1M3LD



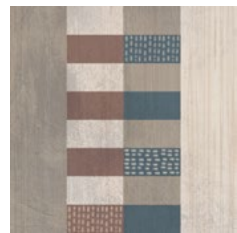
MAZE
INKUJBK19C1M6LD



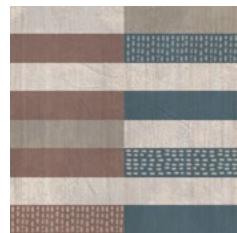
MAZE
INKUJBK19C2M3LD



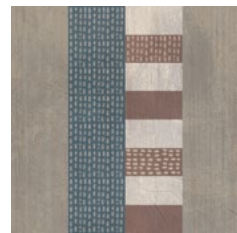
MAZE
INKUJBK19C2M6LD



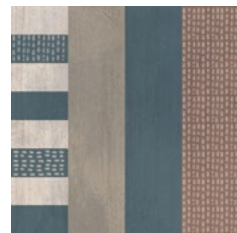
SIDE BY SIDE
INKUDLZ19C1M1LD



SIDE BY SIDE
INKUDLZ19C1M2LD



SIDE BY SIDE
INKUDLZ19C1M3LD



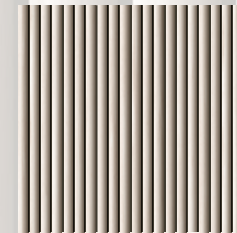
SIDE BY SIDE
INKUDLZ19C1M4LD



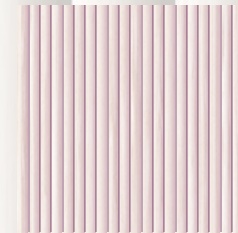
SIDE BY SIDE
INKUDLZ19C1M5LD



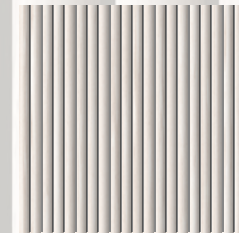
SIDE BY SIDE
INKUDLZ19C1M6LD



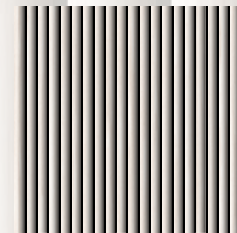
CANNETO
INKSTRX1801



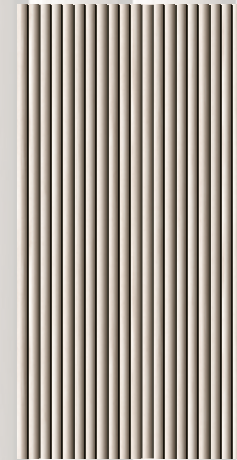
CANNETO
INKSTRX1802



CANNETO
INKSTRX1803



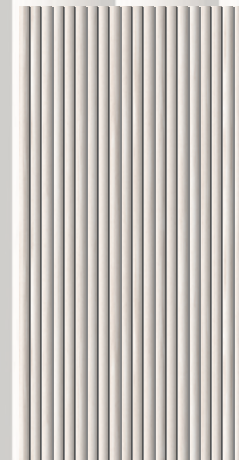
CANNETO
INKSTRX1804



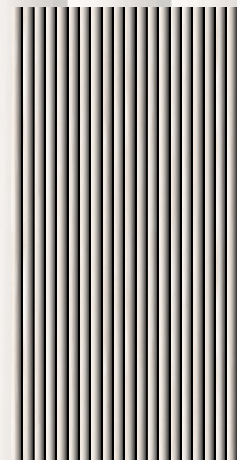
CANNETO
INKSTRX1801



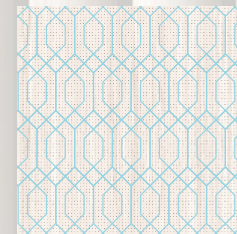
CANNETO
INKSTRX1802



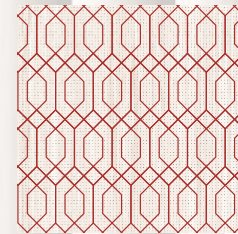
CANNETO
INKSTRX1803



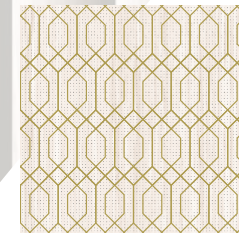
CANNETO
INKSTRX1804



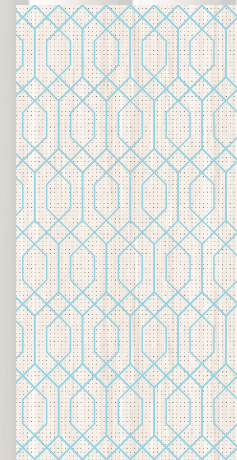
LOSANGA
INKCUKU1801



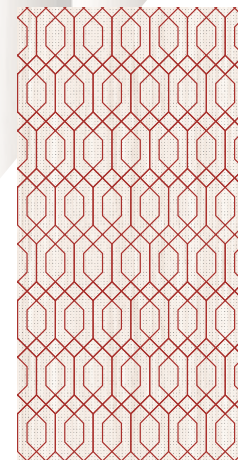
LOSANGA
INKCUKU1802



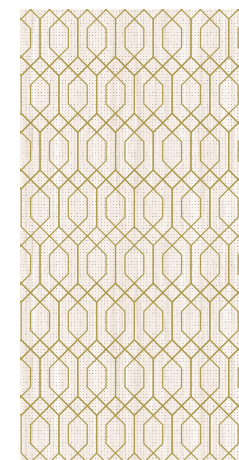
LOSANGA
INKCUKU1803



LOSANGA
INKCUKU1801



LOSANGA
INKCUKU1802



LOSANGA
INKCUKU1803



FOGLIAME
INKPKIT1801



FOGLIAME
INKPKIT1802



FOGLIAME
INKPKIT1803



FOGLIAME
INKPKIT1801

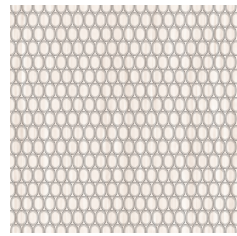


FOGLIAME
INKPKIT1802

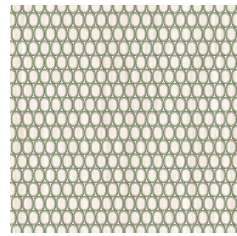


FOGLIAME
INKPKIT1803

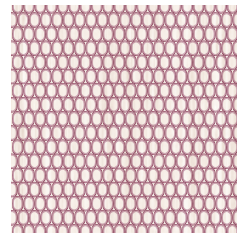
ALDO CIBIC COLLECTION



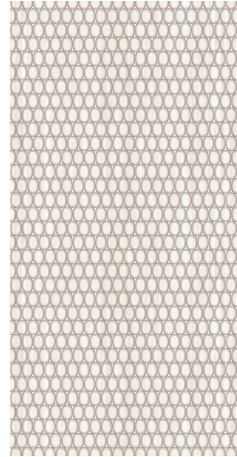
SEMINE
INKWHEE1801



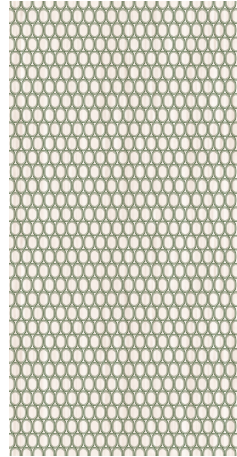
SEMINE
INKWHEE1802



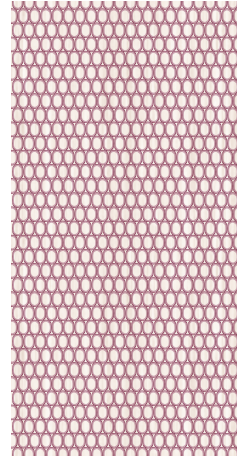
SEMINE
INKWHEE1803



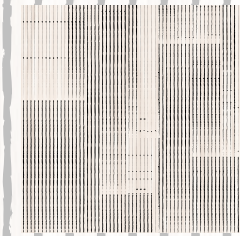
SEMINE
INKWHEE1801



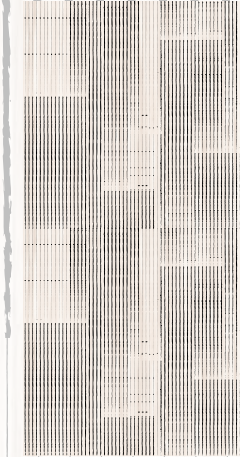
SEMINE
INKWHEE1802



SEMINE
INKWHEE1803



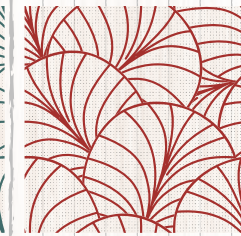
RIGATO
INKAG-SZ1801



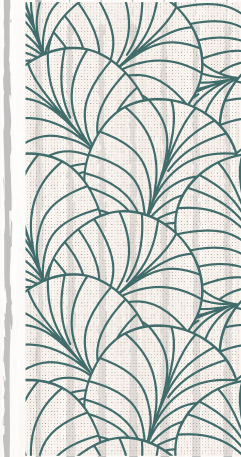
RIGATO
INKAG-SZ1801



VENTAGLIO
INKKIC1801



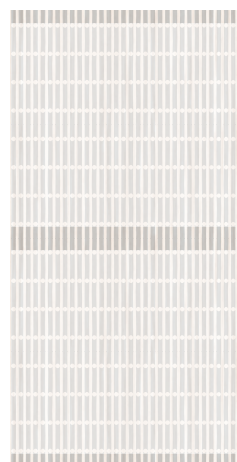
VENTAGLIO
INKKIC1802



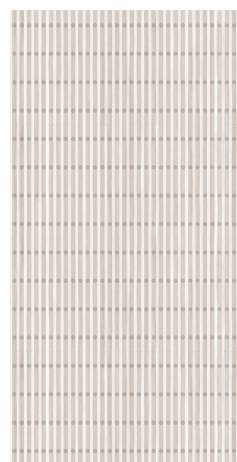
VENTAGLIO
INKKIC1801



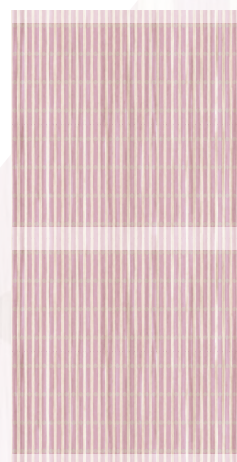
VENTAGLIO
INKKIC1802



TONDINI
INKYJLI1801



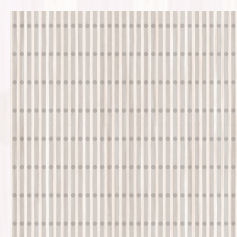
TONDINI
INKYJLI1802



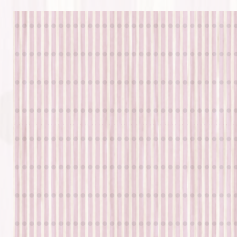
TONDINI
INKYJLI1803



TONDINI
INKYJLI1801

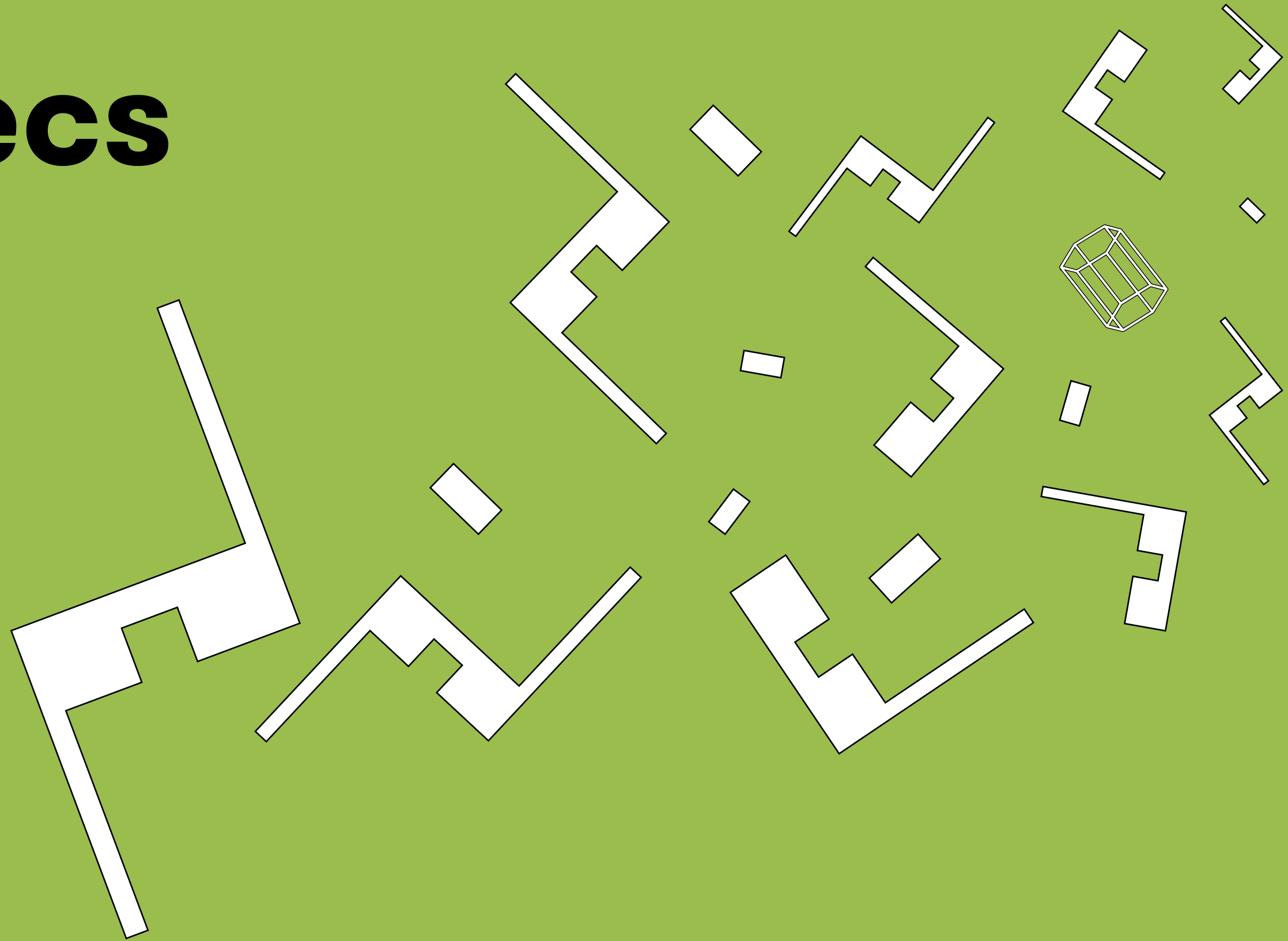


TONDINI
INKYJLI1802



TONDINI
INKYJLI1803

Tech Specs



La forza del multistrato di betulla

The strength of multilayer birchwood

La betulla è un materiale ad alta resistenza.

La particolare disposizione degli strati a fibre incrociate rende i grandi pannelli stabili nel tempo e indeformabili a vita, perfetto a parete anche in ambienti più sensibili come bagni e cucine. Il multistrato di betulla è a tutti gli effetti uno straordinario materiale high-tech frutto del mirabile incontro tra la genialità costruttiva della Natura e quella dell'uomo. Grazie alla sua ineguagliabile resistenza meccanica e alla tenuta degli incollaggi anche nelle situazioni più critiche è ancora oggi utilizzato in applicazioni ad altissimo contenuto tecnologico quali la costruzione di carlinghe di aeroplani o di scafi navali. La betulla ha una resistenza lungo la fibra fino al 30% più elevata rispetto ad altre specie legnose e, a parità di spessore, assicura una stabilità altrettanto superiore. È oltretutto una delle latifoglie a più rapida ricrescita, pertanto garantisce il più razionale utilizzo delle risorse forestali. A seguito di uno specifico lavoro di ricerca e sviluppo Inkiostro Bianco può dichiarare di avere scelto di utilizzare la betulla come materiale nobile e naturale per questi elementi di arredo a parete.

Birch is a highly resistant material.

The peculiar disposition of the layers in crossed fibers makes the panels stable and non-deformable, which is perfect for wallcovering use, even in the most difficult spaces, such as bathrooms and kitchens. The multilayer birchwood support is an extraordinary high-tech material that is the result of blending Nature's constructive genius with man's inventiveness. Its unequalled mechanical resistance and the fact that the bonded elements retain their grip even under the most stressful of conditions means it is still used today for extremely high technological situations such as airplane cockpits and the hulls of ships. The resistance of birchwood across the fibers is 30% higher than other types of wood and, given equal thickness, ensures a better stability. It is also one of the broad-leaved trees with the quickest regrowth, for this reason it ensures a more rational use of the forest resources. Following a specific work of research and development Inkiostro Bianco has chosen to use birch as a noble and natural material for this wall furniture element.

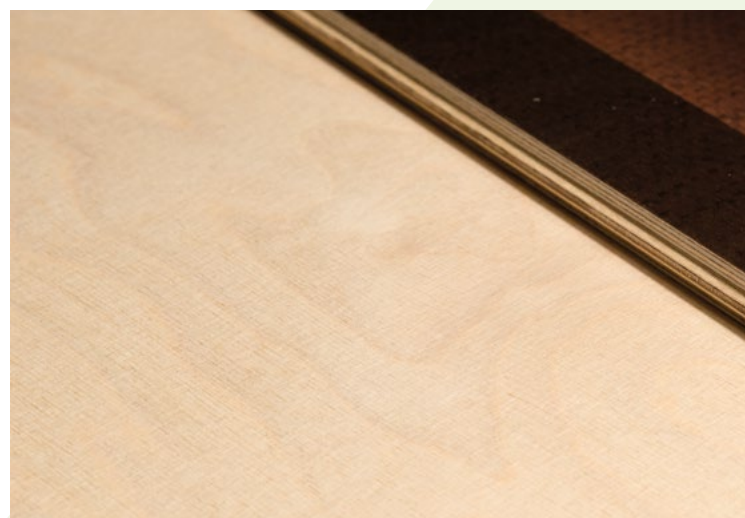
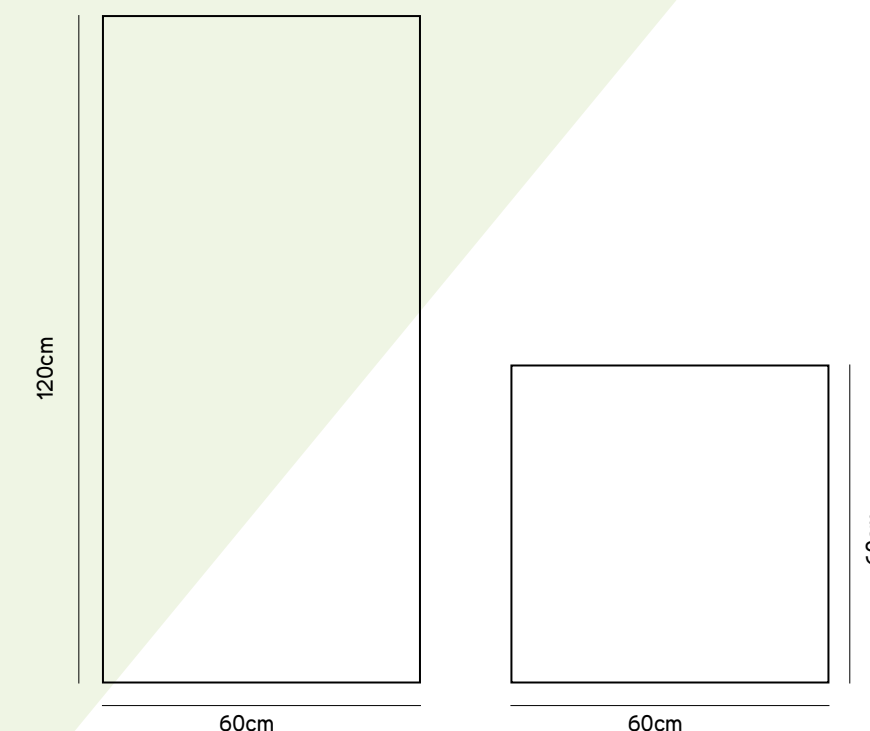
Elementi d'arredo a parete in legno di betulla decorata per comporre boiserie, complementi o composizioni parietali di design.

Decorated birchwood wall furniture elements for boiserie, complements or design wall compositions.

DIMENSIONI/ DIMENSIONS

Materiale: multistrato di betulla
Misure pannelli: 60X60 cm - 60X120 cm
Spessore totale: 15 mm
Posa: incollato

Material: multilayer birchwood
Panels size: 60X60 cm - 60X120 cm
Total thickness: 15 mm
Installation: glued-down



Certificazioni

Certifications:

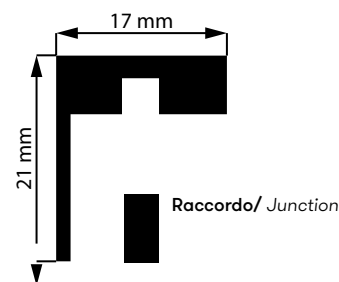


I pannelli lineadeko sono stampati direttamente su legno di betulla naturale. Questo comporta la presenza di tutte le caratteristiche fisiche proprie del legno: nodi, eventuali differenze di tono, venature. Non si tratta di un difetto, ma della loro naturale bellezza.

Lineadeko panels are printed directly on natural birchwood. This results in the presence of the physical characteristics of wood: knots, eventual differences in tone, veining. This is not a flaw, but their natural beauty.

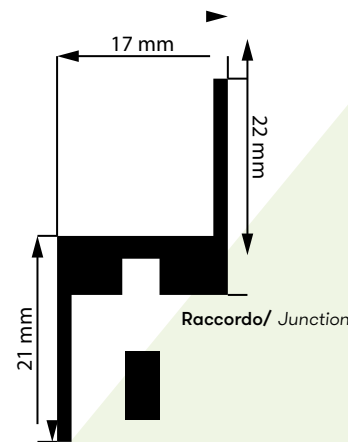
Profilo standard

Standard profile

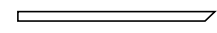


Profilo Backlighting (per retroilluminazione)

Backlighting profile




Barra profilo L.60 cm Taglio 45° destro / Profile bar L.60 cm 45° cut right


Barra profilo L.60 cm Taglio 45° sinistro / Profile bar L.60 cm 45° cut left


Barra profilo L.120 cm dritto / Profile bar L.120 cm straight


Barra profilo L.180 cm dritto / Profile bar L.180 cm straight


Barra profilo L.305 cm dritto / Profile bar L.305 cm straight

Colori profili

Profiles colours



Anodizzato nero NE
Anodised black Ne



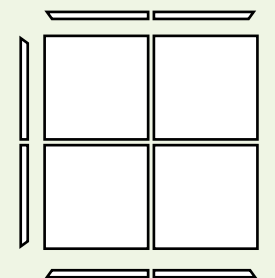
Anodizzato titanio AT
Anodised titanium AT

Richiedi al tuo referente commerciale le composizioni modulari e i diversi sistemi di ancoraggio disponibili.
Ask your sales representative about the modular compositions and available anchoring systems.

ELEMENTI D'ARREDO A PARETE

WALL FURNITURE ELEMENTS

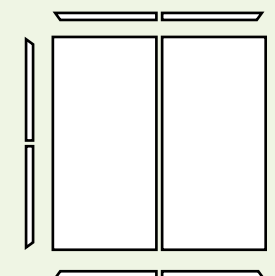
COMPOSIZIONI DESIGN / DESIGN COMPOSITIONS



ALFA

Composizione da 4 pannelli formato 60X60 cm + kit profili lineari e angolari standard/back-lighting (da indicare al momento dell'ordine)
Dimensione totale modulo: 120x120 cm

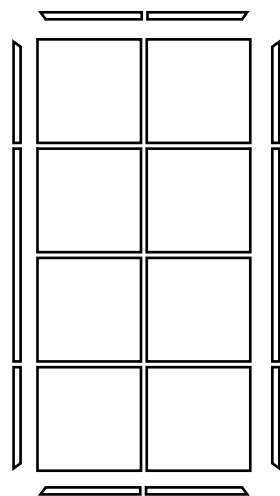
Composition made of q.ty 4 60X60 cm panels + linear and corner profile kit standard/back-lighting (to be specified on the request)
Total module size: 120X120 cm



BETA

Composizione da 2 pannelli formato 60x120 cm + kit profili lineari e angolari standard/back-lighting (da indicare al momento dell'ordine)
Dimensione totale modulo: 120x120 cm

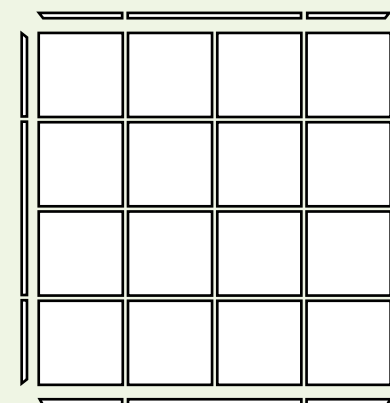
Composition made of q.ty 2 60X120 cm panels + linear and corner profile kit standard/back-lighting (to be specified on the request)
Total module size: 120X120 cm



GAMMA

Composizione da 8 pannelli formato 60X60 cm + kit profili lineari e angolari standard/back-lighting (da indicare al momento dell'ordine)
Dimensione totale modulo: 120x240 cm

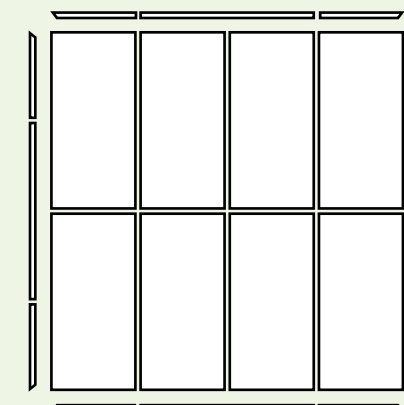
*Composition made of q.ty 8 60X60 cm panels + linear and corner profile kit standard/back-lighting (to be specified on the request)
Total module size: 120X240 cm*



ZETA

Composizione da 16 pannelli 60X60 cm + kit profili lineari e angolari standard/back-lighting (da indicare al momento dell'ordine)
Dimensione totale modulo: 240X240 cm

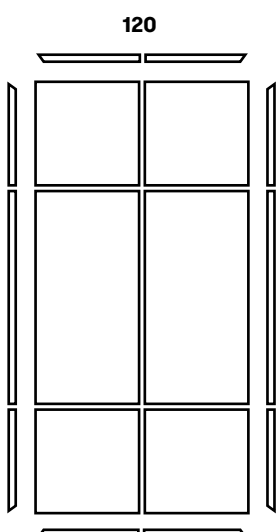
*Composition made of q.ty 16 panels 60X60 cm + linear and corner profile kit standard/back-lighting (to be specified on the request)
Total module size: 240X240 cm*



OMEGA

Composizione da 8 pannelli 60X120 cm + kit profili lineari e angolari standard/back-lighting (da indicare al momento dell'ordine)
Dimensione totale modulo: 240X240 cm

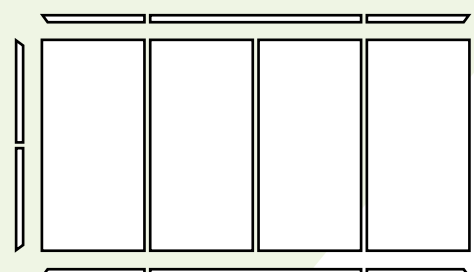
*Composition made of q.ty 8 panels 60X120 cm + linear and corner profile kit standard/back-lighting (to be specified on the request)
Total module size: 240X240 cm*



DELTA

Composizione da 6 pannelli: 4 pannelli formato 60X60 cm + 2 pannelli formato 60X120 cm + kit profili lineari e angolari standard/back-lighting (da indicare al momento dell'ordine)
Dimensione totale modulo: 120X240 cm

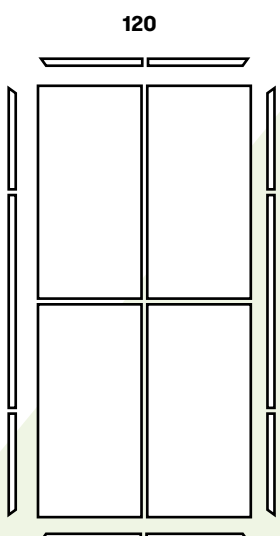
*Composition made of 6 panels: q.ty 4 panels 60X60 cm + q.ty 2 panels 60X120 cm + linear and corner profile kit standard/back-lighting (to be specified on the request)
Total module size: 120X240 cm*



BOISERIE

Boiserie composta da 4 pannelli 60X120 cm + kit profili lineari e angolari standard/back-lighting (da indicare al momento dell'ordine)
Dimensione totale modulo: 240X120 cm

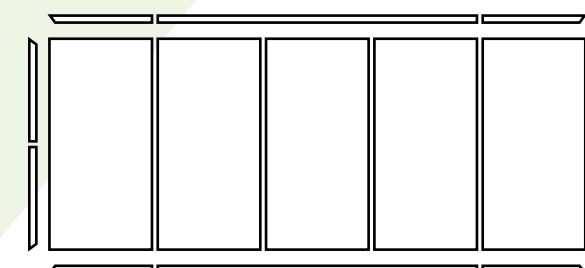
*Boiserie consisting of q.ty 4 panels 60X120 cm + linear and corner profile kit standard/back-lighting (to be specified on the request)
Total module size: 240X120 cm*



EPSILON

Composizione da 4 pannelli 60X120 cm + kit profili lineari e angolari standard/back-lighting (da indicare al momento dell'ordine)
Dimensione totale modulo: 120X240 cm

*Composition made of q.ty 4 panels 60X120 cm + linear and corner profile kit standard/back-lighting (to be specified on the request)
Total module size: 120X240 cm*



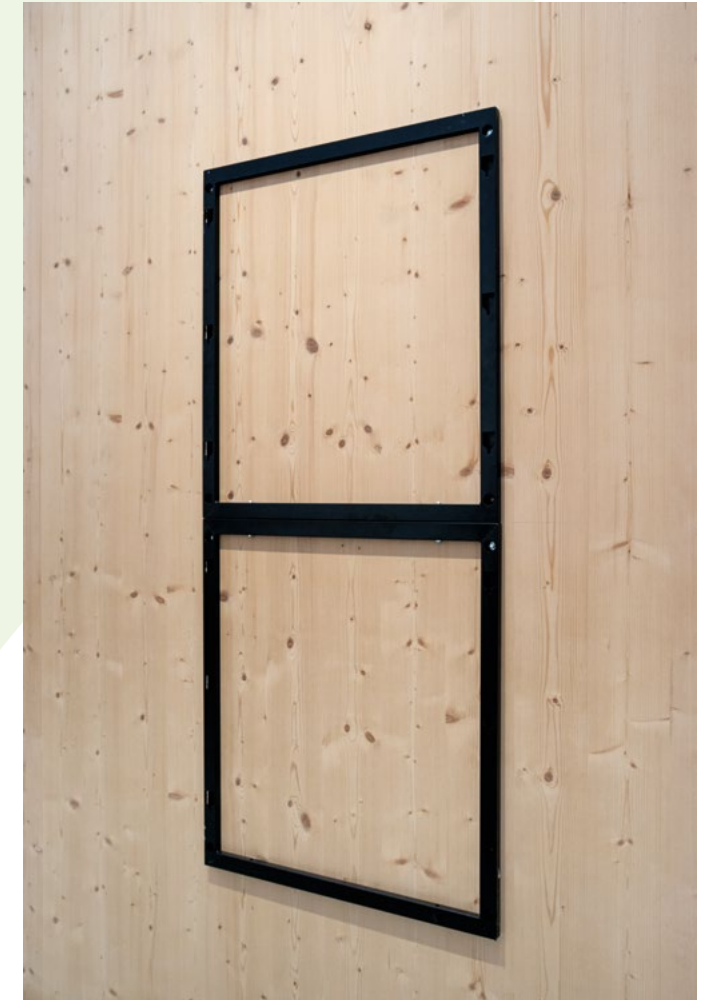
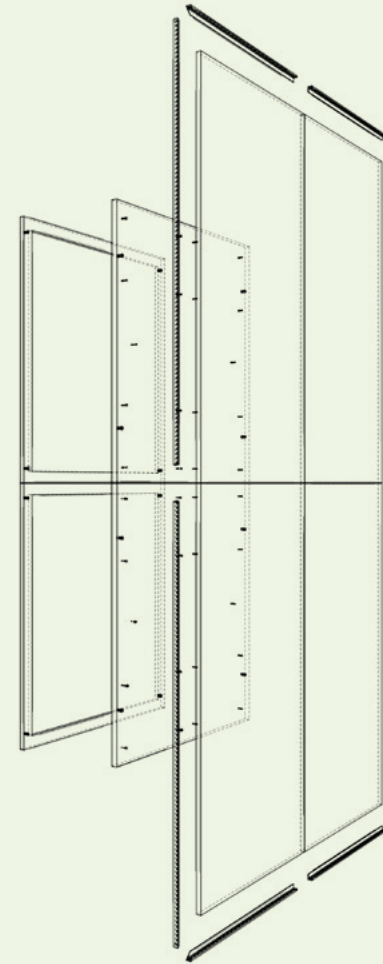
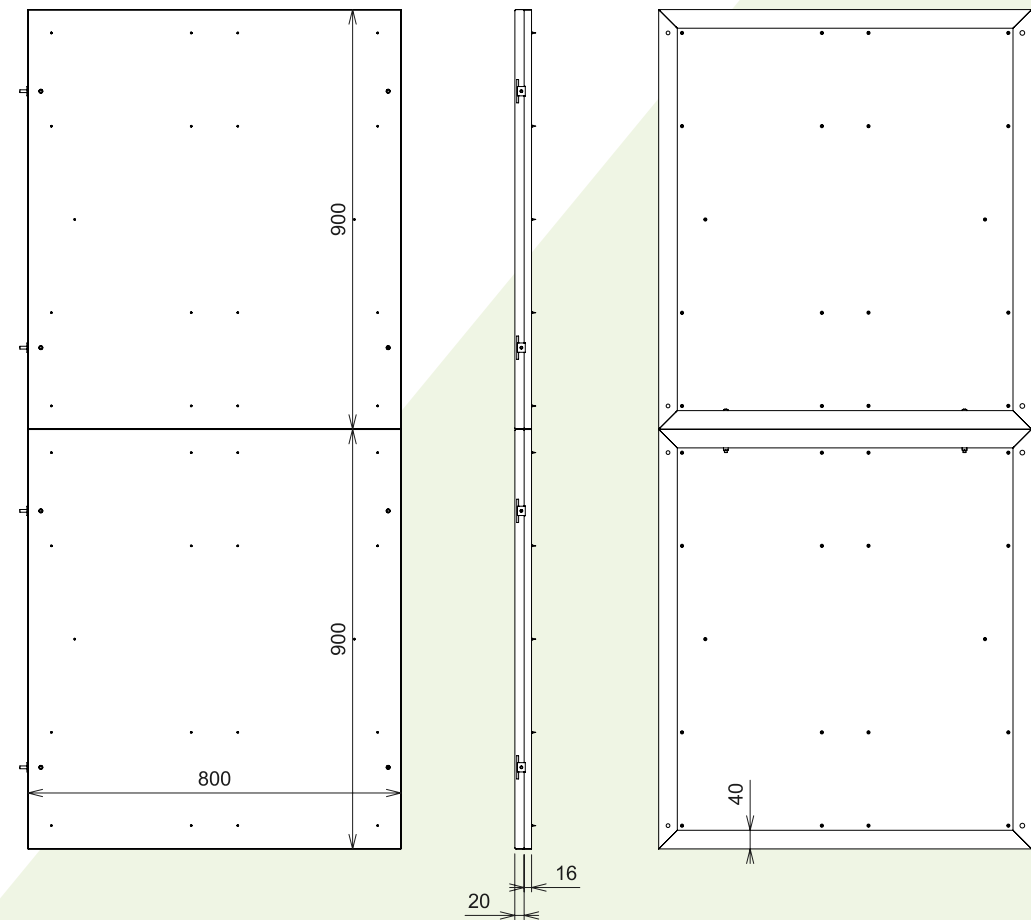
Boiserie composta da 5 pannelli 60X120 cm + kit profili lineari e angolari standard/back-lighting (da indicare al momento dell'ordine)
Dimensione totale modulo: 300X120 cm

*Boiserie consisting of q.ty 5 panels 60X120 cm + linear and corner profile kit standard/back-lighting (to be specified on the request)
Total module size: 300X120 cm*

CORNICE DI ANCORAGGIO/ ANCHORING FRAME

Struttura metallica per fissaggio dei pannelli lineadeko a parete con possibilità di retroilluminazione LED*
Composizione da 4 pannelli 60X120 cm + cornice e componenti di ancoraggio.

Metal frame for fixing lineadeko panels to wall with possibility of LED backlighting
Composition of 4 panels 60X120 cm + frame and anchoring components.*



*Inkiostro Bianco non fornisce le componenti per la retroilluminazione, tuttavia per informazioni specifiche a riguardo, è possibile contattare il proprio referente commerciale.

**Inkiostro Bianco does not supply the components for the backlighting, however for specific information on this, please contact your sales referent.*

HEADQUARTER & SHOWROOM

via Monte Bianco, 55
41042 Fiorano Modenese (Modena)
phone: +39 0536 803.503
fax: +39 0536 185.2040

info@inkiestrobianco.com
press@inkiestrobianco.com

www.inkiestrobianco.com

Technical partner:

ListoneGiordano

CREDITS

MARKETING & COMMUNICATION

Elena Grazioli

ART DIRECTOR

Manuel Mollicone

GRAPHIC DESIGN

Bruna Pellegrino

3D ARTIST & VISUAL DESIGN

Paolo Amenta

PHOTO EDITING

Bruna Pellegrino

Paolo Amenta

COPY

Elena Grazioli

Francesca Barbieri

Printed and bound in Italy by Sincromia Srl.

©2023 Inkiostro Bianco. All rights reserved.

THANKS TO:

Ringraziamo i brand selezionati per avere reso disponibili i modelli 3D dei complementi d'arredo scelti per lo styling dei setting sviluppati.

We would like to thank the selected brands for providing the 3D models of the furnishing elements chosen for the styling of the settings.

FOLLOW US



