

• LIGHT × SHADOWS

● LIGHT × SHADOWS

LA COLLEZIONE PONE L'ACCENTO SUL TEMA DELLA GENTILEZZA ESTETICA, UN RITORNO ALLA SOBRIETÀ INTESA COME PACATEZZA E MORBIDEZZA DEI TRATTI, LENTEZZA DEGLI ATTIMI RAFFIGURATI.

I soggetti proposti accarezzano l'osservatore e lo trasportano in uno stato d'animo più leggero. Leggerezza non significa superficialità ma uno sguardo delicato che sfiora la bellezza del mondo circostante.

La gentilezza estetica è il punto di partenza della ricerca di equilibrio che esploriamo attraverso il confronto fra luci e ombre. Due dimensioni che non possono esistere l'una senza l'altra e che si rincorrono bilanciandosi in un costante mutamento. Una sorta di metafora della condizione dell'animo umano attraverso le diverse fasi della vita. Senza aver fatto esperienza di entrambi i lati non è possibile trovare l'equilibrio interiore.

All'interno di questa cornice viene definita una nuova dimensione decorativa che non si impone ma che si accompagna agli arredi presenti in un determinato spazio. Un linguaggio etereo che caratterizza una proposta accogliente che rasserena e rassicura lasciando spazio sia a dimensioni luminose sia a prospettive ombrose. Gli ambienti che ospiteranno queste decorazioni saranno in grado di accogliere in un abbraccio avvolgente.

UN SOFFIO CHE COLPISCE IN MODO AGGRAZIATO.

THE COLLECTION EMPHASISES THE THEME OF AESTHETIC GENTLENESS, A RETURN TO SOBRIETY UNDERSTOOD AS CALM AND SOFT TRAITS, THE SLOWNESS OF THE DEPICTED MOMENTS.

The subjects caress the observers and transport them into a lighter state of mind. Lightness does not mean superficiality but a delicate gaze that touches the beauty of the surrounding world.

Aesthetic gentleness is the starting point of the search for balance that we explore through the confrontation between light and shadow. Two dimensions that cannot exist without each other and that chase each other balancing in a constant change. A sort of metaphor for the condition of the human soul through the different phases of life. Without experiencing both sides, it is not possible to find inner balance.

Within this framework a new decorative dimension is defined, which does not impose itself but matches with the existing furnishing elements in a given space. An ethereal language that characterizes a cozy proposal that reassures and calms, leaving room for both luminous dimensions as well as shady perspectives. The rooms that will host these decorations will be able to embrace and welcome the guests.

A BREATH THAT STRIKES IN A GRACEFUL WAY.

DIAMANTE

INKAAS22



DIAMANTE



INKAAST2201



INKAAST2202





● ● LIGHT × SHADOWS

CLEMATIDE

INKAEDD22

CLEMATIDE



INKAEDD2201



INKAEDD2202



PAINTED LEAVES

INKIETN22



PAINTED
LEAVES



INKIETN2201



INKIETN2202





● ● LIGHT × SHADOWS

ETHEREAL BEAUTY

INKHLIE22

ETHEREAL
BEAUTY



INKHLIE2201



INKHLIE2202



LUXOR

INKSRC122



LUXOR



INKSRC12201



INKSRC12202





● ● LIGHT × SHADOWS

**GOLDEN
PALM**
INKCLSI22

GOLDEN PALM



INKCLSI2201/A



INKCLSI2201/B



● ● LIGHT x SHADOWS

PHAEDRA

INKRTAI22

PAGE 15



PHAEDRA



INKRTAI2201



INKRTAI2202



INKRTAI2203



● ● LIGHT × SHADOWS

MOONLIGHT

INKNEHA22

MOONLIGHT



INKNEHA2201



INKNEHA2202



THE CLIFFS

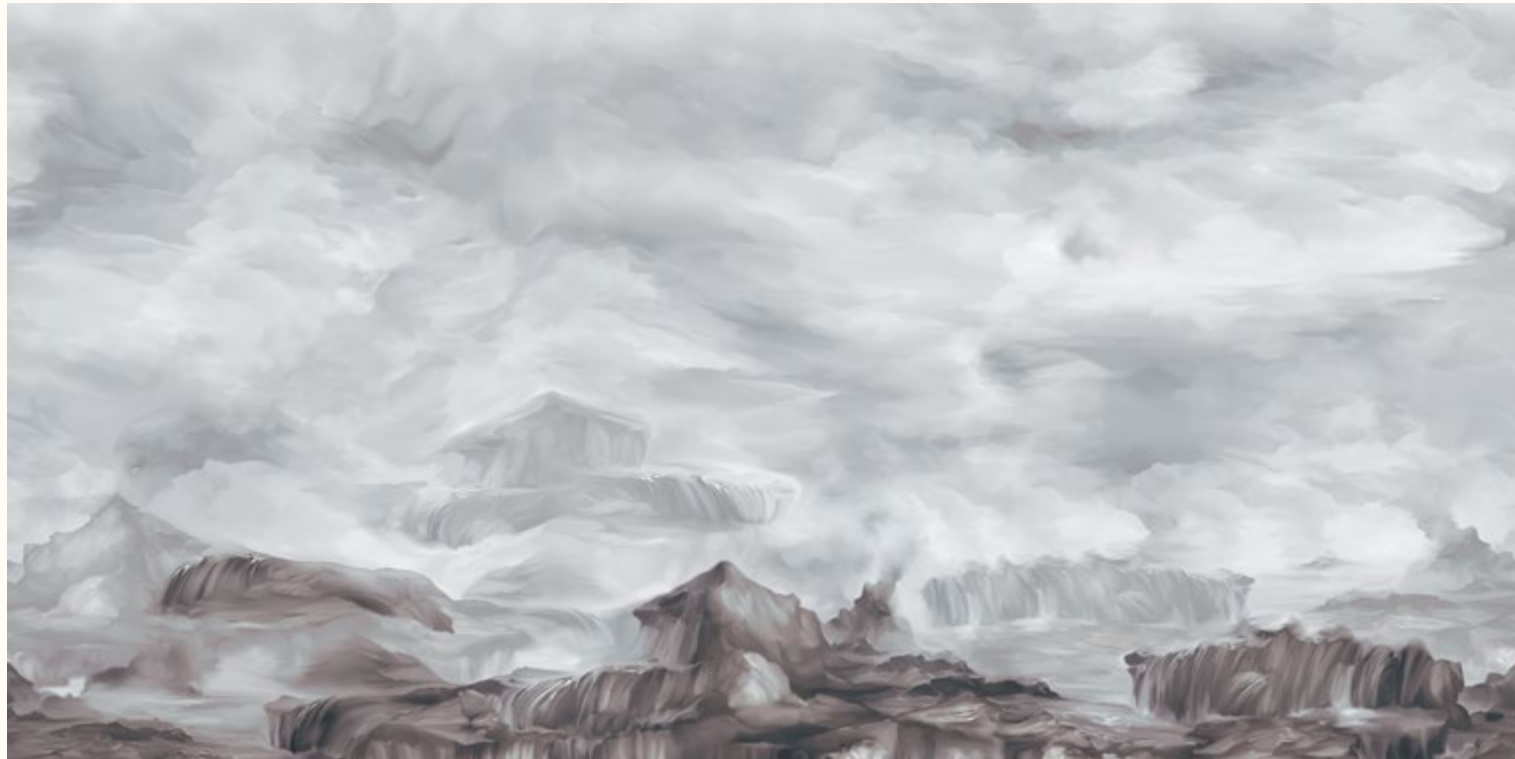
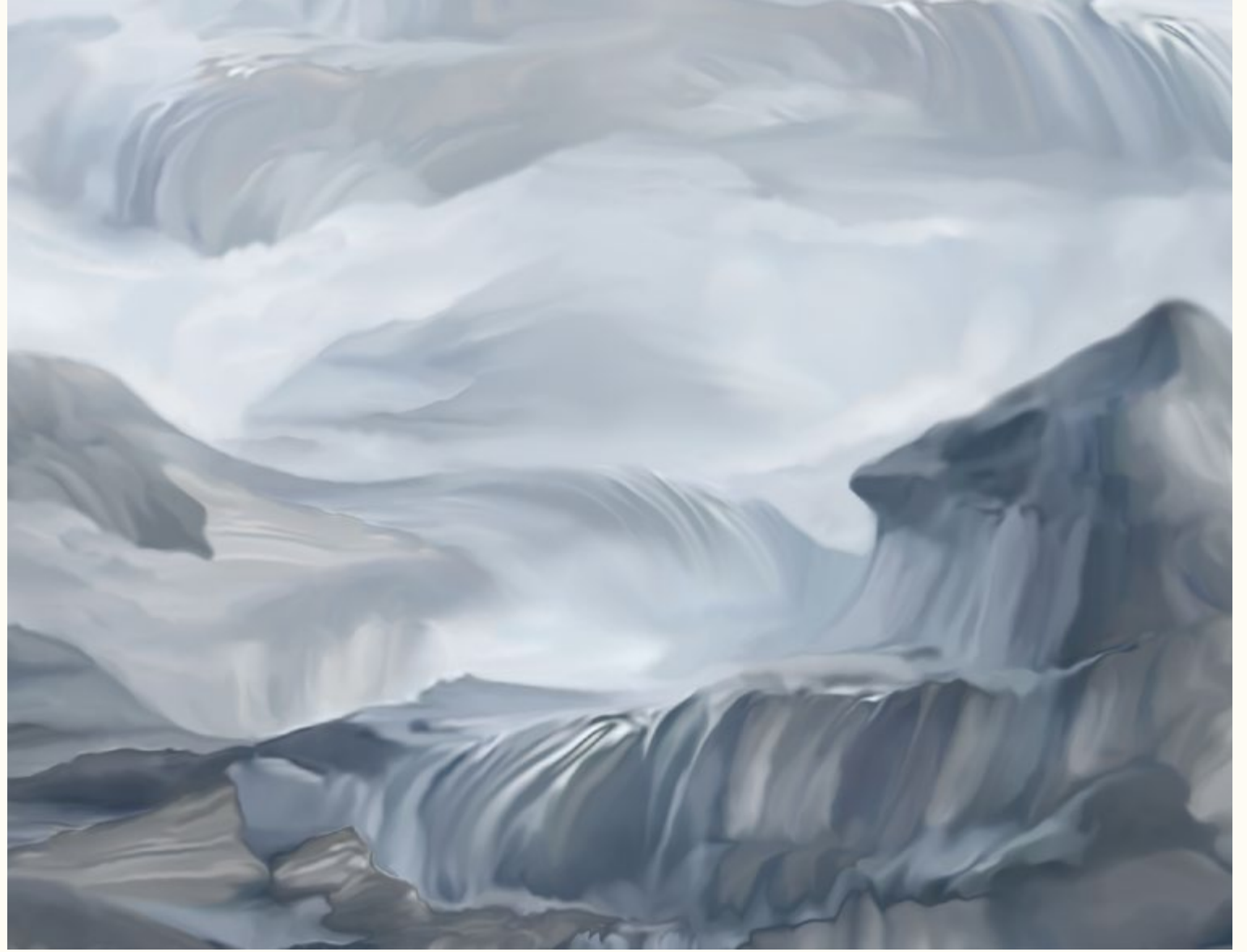
INKIGT122



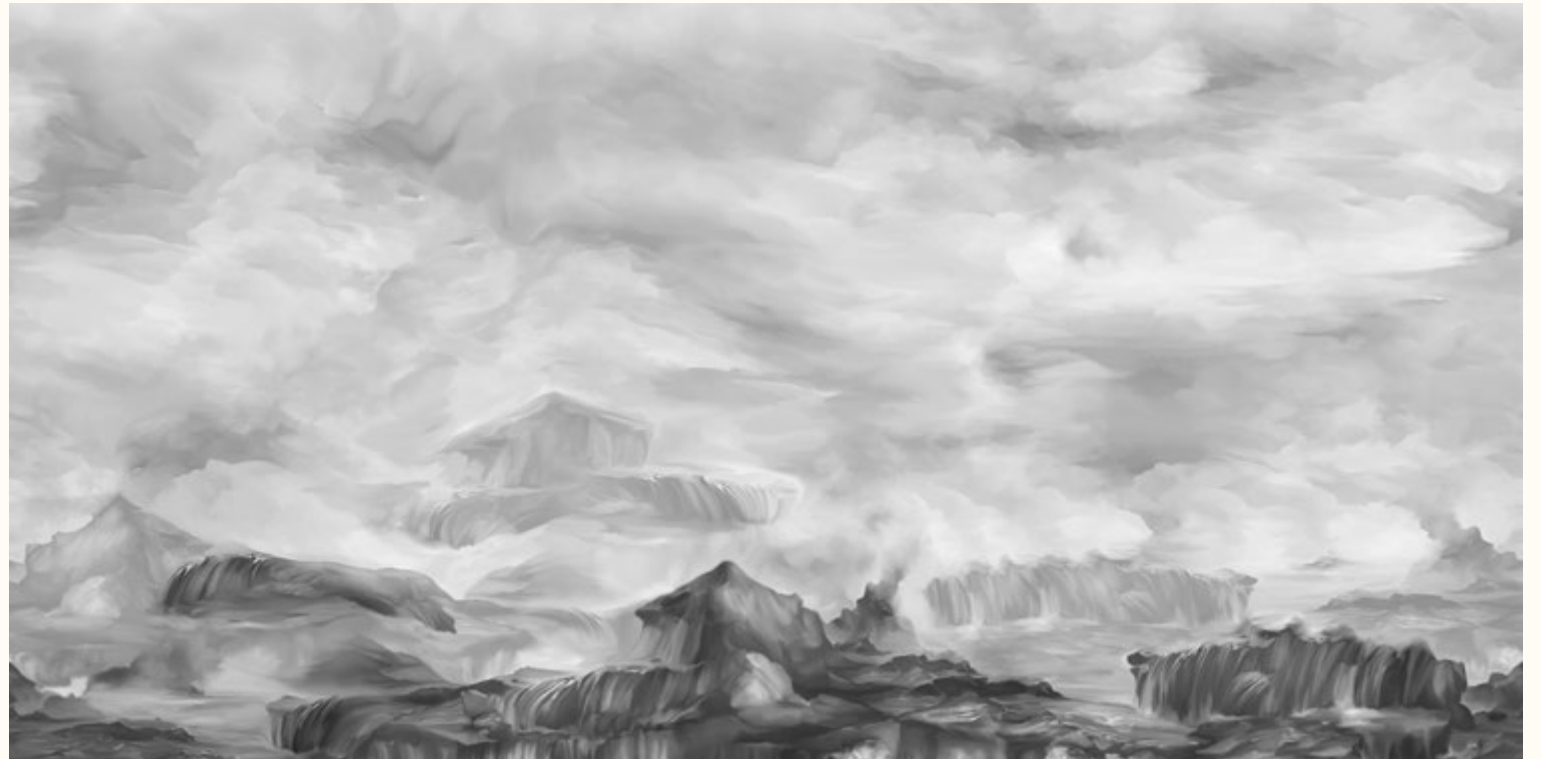
THE CLIFFS



INKIGTI2201



INKIGTI2202



INKIGTI2203



● ● LIGHT × SHADOWS

ODESSA

INKTRAE22

ODESSA



INKTRAE2201



INKTRAE2202



AGLAIA
INKNGAR22



AGLAIA



INKNGAR2201



INKNGAR2202





● ● LIGHT × SHADOWS

KUNDERA

INKIEAN22

KUNDERA



INKIEAN2201



INKIEAN2202



INKIEAN2203



INKIEAN2204



CAOS
INKINOI22



CAOS



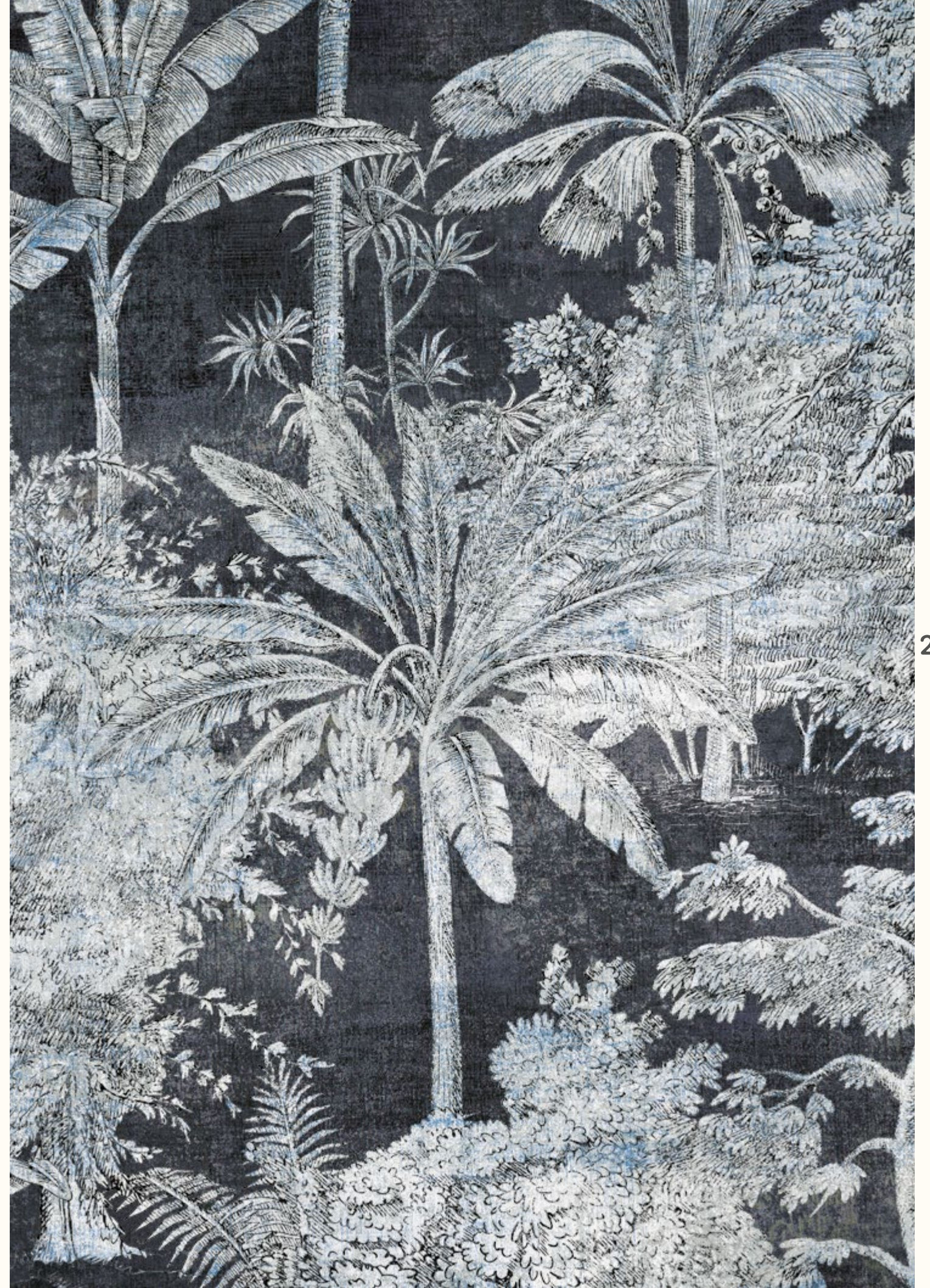
INKINOI2201



INKINOI2202



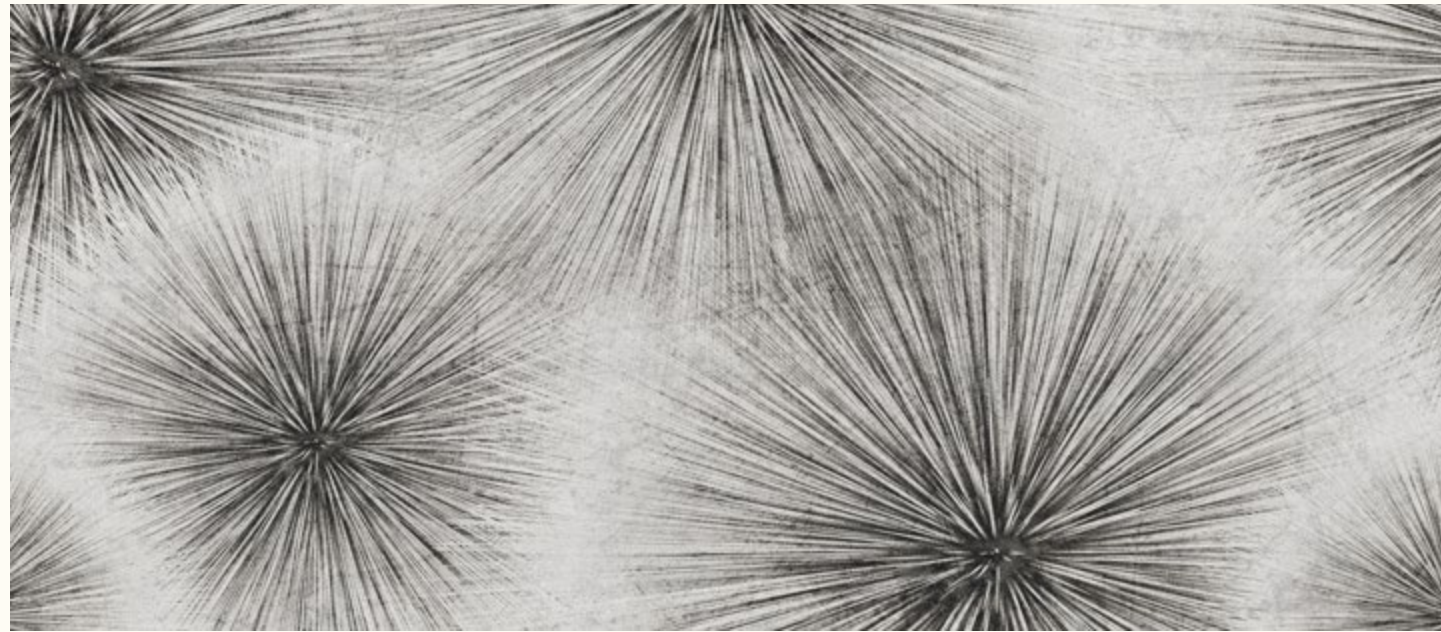
INKINOI2203



SPARKS
INKPRSB22



SPARKS



INKPRSB2201



INKPRSB2202



INKPRSB2203



INKPRSB2204

WILD
EDEN
INKESRL22



WILD EDEN



INKESRL2201



INKESRL2202



INKESRL2203



INKESRL2204



● ● LIGHT × SHADOWS

FLOWER CONNECTION

INKSFNT22

FLOWER CONNECTION



INKSFNT2201



INKSFNT2202



INKSFNT2203



CARDUUS

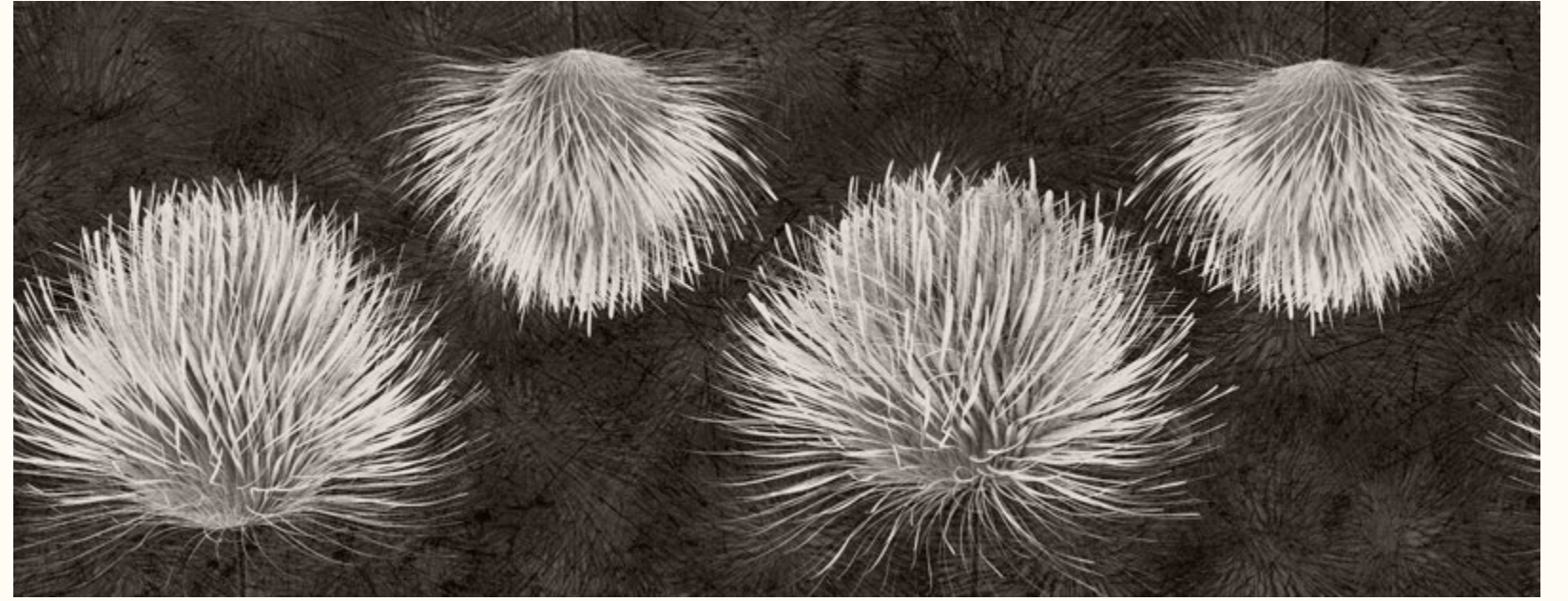
INKUDAR22



CARDUUS



INKUDAR2201



INKUDAR2202



INKUDAR2203



INKUDAR2204



● ● LIGHT × SHADOWS

PENSIERO

INKCPOO22

● ● LIGHT × SHADOWS

PENSIERO



INKCPOO2201



INKCPOO2202



INKCPOO2203

WINTER SEA

INKEADO22



WINTER SEA



INKEADO2201





CENTURY

INKLEDE22

CENTURY



INKLEDE2201



INKLEDE2202



ONCE UPON A TIME

INKATSC22



ONCE UPON A TIME



INKATSC2201



INKATSC2202



INKATSC2203

FOLIAGE
INKRIEN22



FOLIAGE



INKRIEN2201



INKRIEN2202



● ● LIGHT x SHADOWS

AMARILLIDE

INKDNTA22

PAGE 47



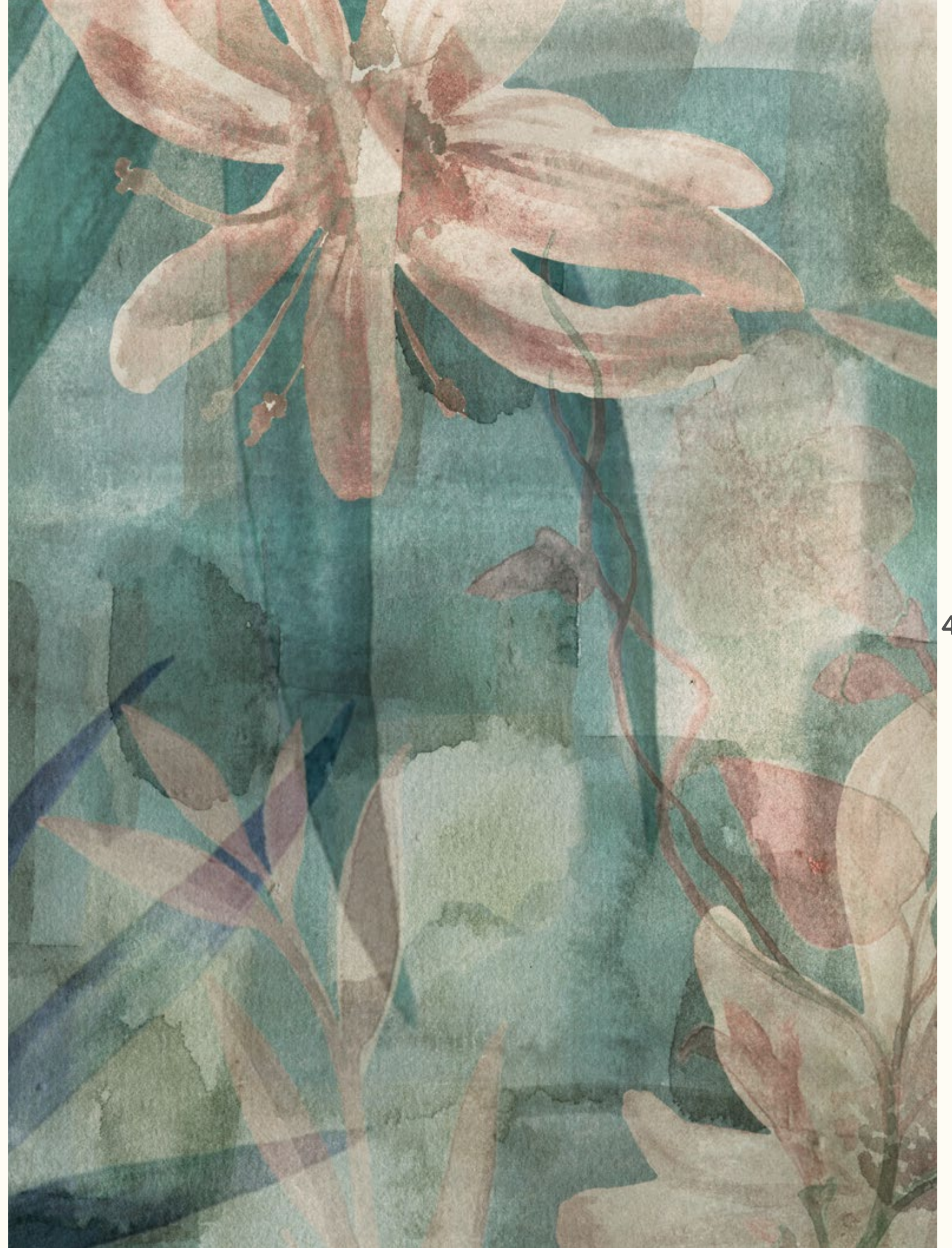
AMARILLIDE



INKDNTA2201



INKDNTA2202





ANTIK
INKINAA22

ANTIK



INKINAA2201



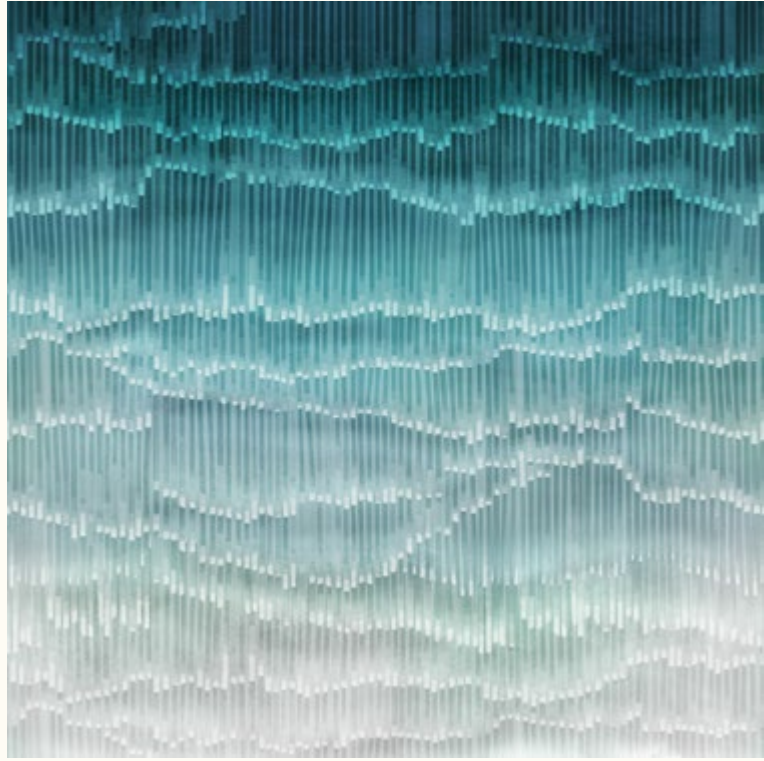
INKINAA2202



FLUVIA
INKENFU22



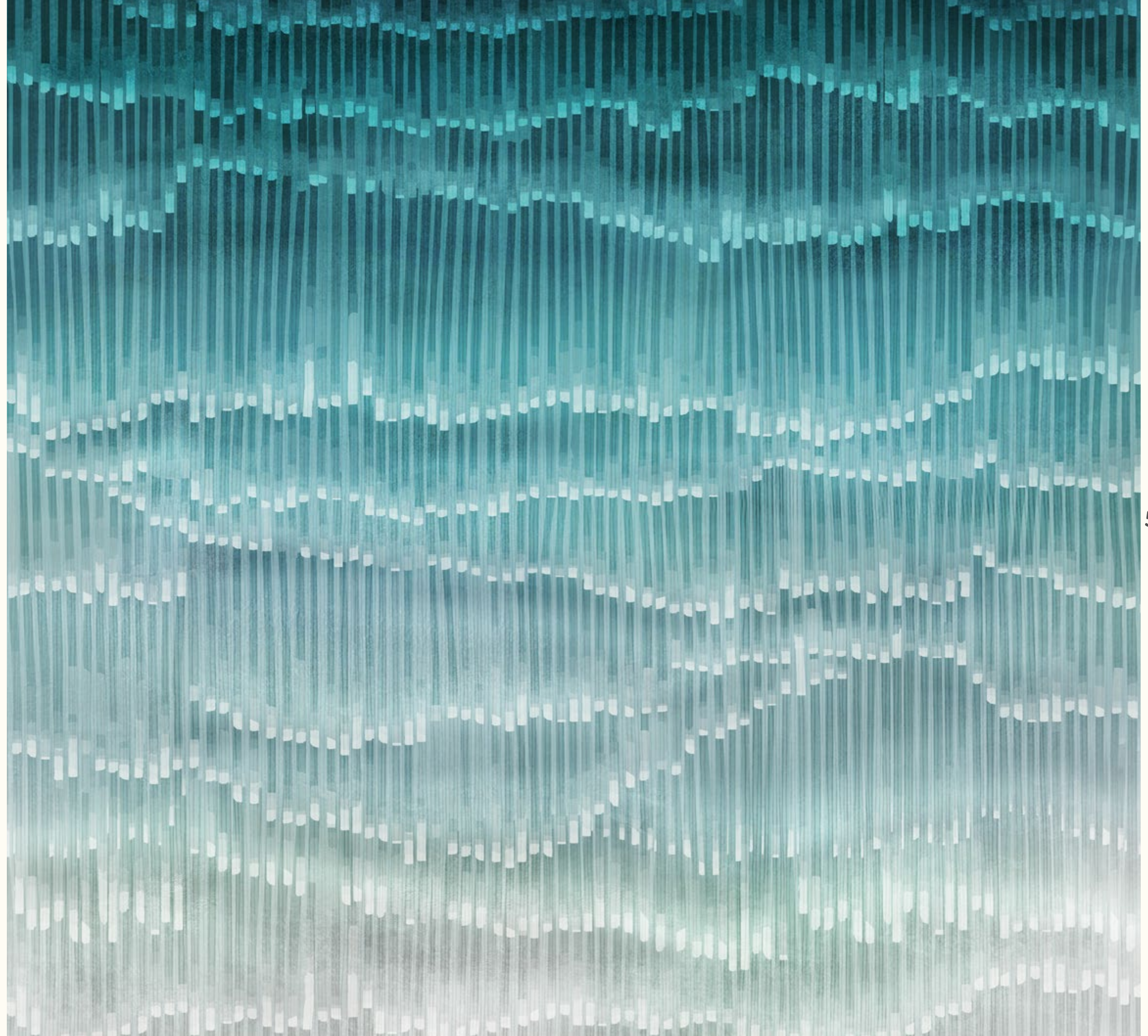
FLUVIA



INKENFU2201



INKENFU2202



ALTEA
INKARRR22



ALTEA



INKARRR2201



INKARRR2202



BLOWIN' IN THE WIND

INKEBDS22



BLOWIN' IN THE WIND



INKEBDS2201



INKEBDS2202





● ● LIGHT × SHADOWS

WARM WOOL

INKSIRV22

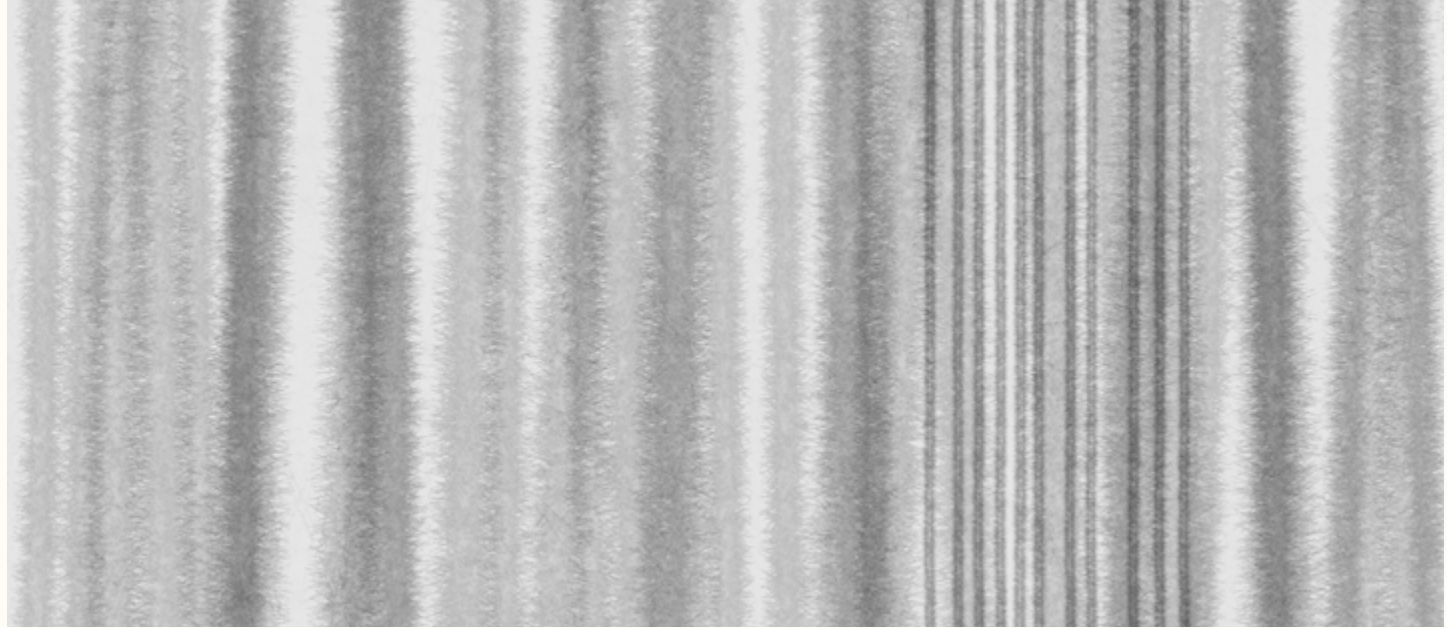
WARM WOOL



INKSIRV2201



INKSIRV2202



INKSIRV2203

HEADQUARTER & SHOWROOM

via Monte Bianco, 55
41042 Fiorano Modenese (Modena)
ph: +39 0536 803.503
info@inkiestrobianco.com
press@inkiestrobianco.com
www.inkiestrobianco.com

CREDITS

ART DIRECTOR

Manuel Mollicone

GRAPHIC DESIGN

@doppiaemmegram

3D ARTIST & PHOTO EDITING

@doppiaemmegram

COPY

Elena Grazioli
Francesca Barbieri

DESIGNERS

Anna D'Andrea
Barbara Varini
Denise Bandini
Giorgia Ricci
Inkiostro Bianco
Studio Zero

FOLLOW US



● ● LIGHT x SHADOWS



Inkiostro

Bianco[®]

CREATIVE THINKING

